

How to connect



| | | | |
|---|-------------------------------|-----------------------------|---------------------|
| Project title: How to connect spark detection and extinguishing system. | Project no.: 1 | Project rev.: | Page 1 |
| Customer: | DCC: | | Scale: |
| Page title: Frontpage | Drawing no.: 5015100 | Page rev.: | Previous page: |
| Filename: SafeVent - Spark Ex system | Constructor (project/page) LH | | Next page: 2 |
| Page ref.: | Appr. (date/sign.) | Last correction: 12/22/2013 | Number of pages: 39 |

Index:

1 Zone system

Page 2 - 14

1 Zone system with after detektion

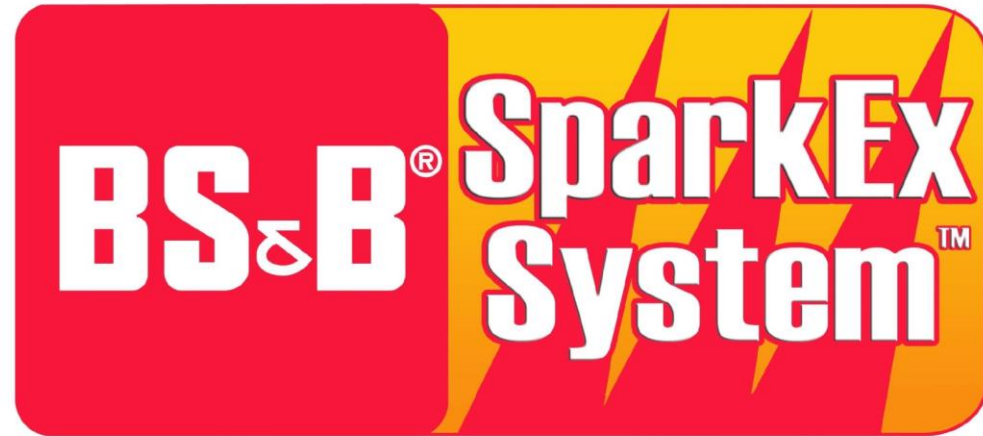
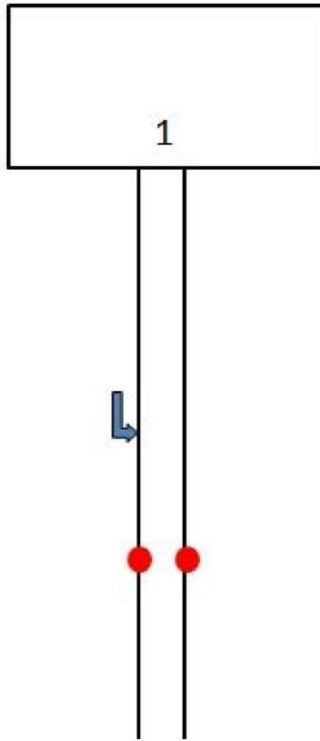
Page 15 - 26

2 Zone system

Page 27 - 39



| | | | |
|--|-------------------------------|----------------------------|---------------------|
| Project title:How to connect spark detection and extinguishing system. | Project no.: 1 | Project rev.: | Page 2 |
| Customer: | DCC: | | Scale: |
| Page title: Frontpage | Drawing no.: 5015100 | Page rev.: | Previous page: 1 |
| Filename: SafeVent - Spark Ex system | Constructor (project/page) LH | | Next page: 3 |
| Page ref.: | Appr. (date/sign.) | Last correction: 1/22/2014 | Number of pages: 39 |



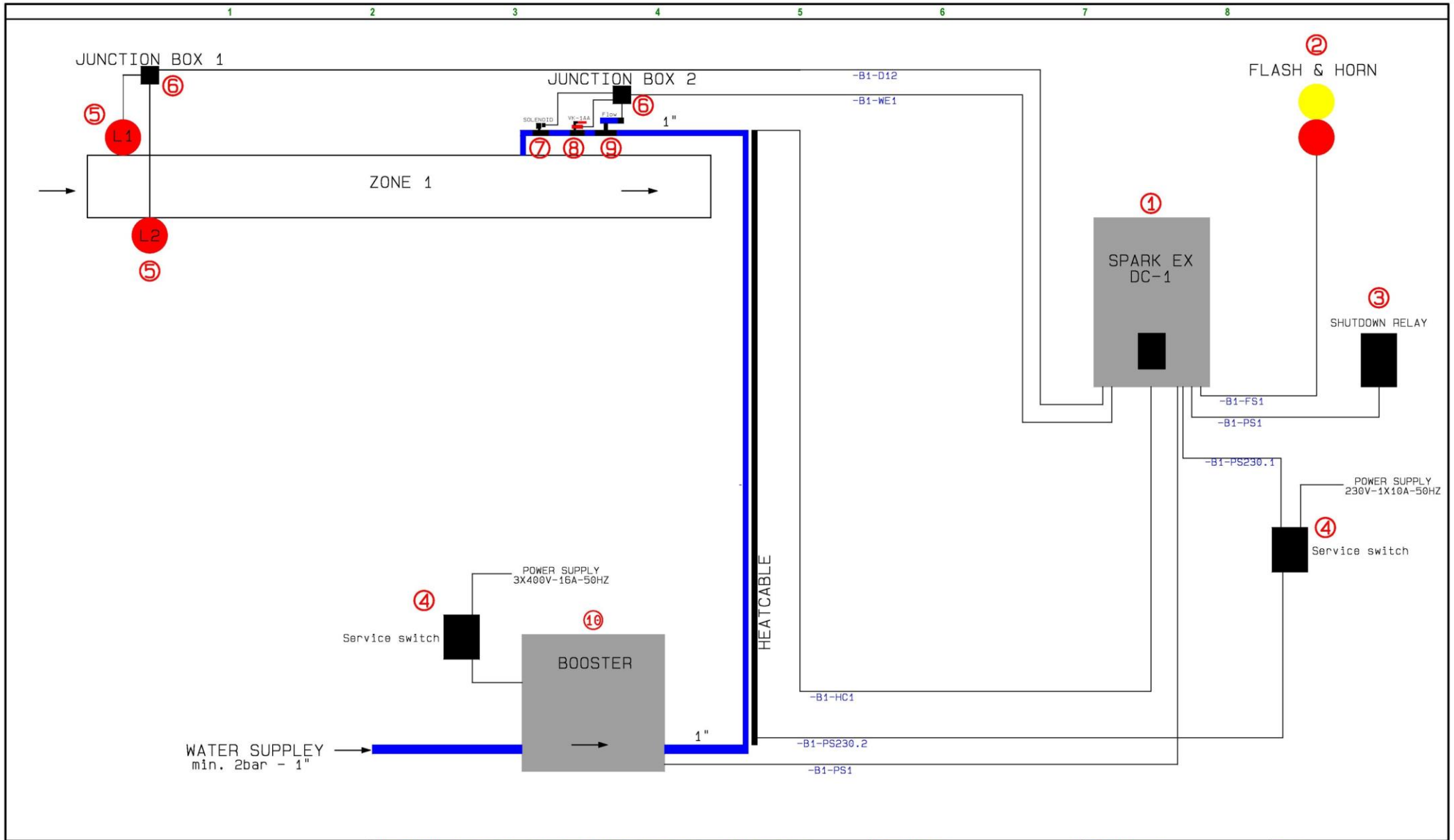
How to connect 1 Zone system

| Item No. | Product Name |
|----------|---|
| 1 | * 101101 Sparkdetection central DC1 9000 101101-JP Sparkdetection central DC1 9000 JP (100V) |
| 2 | 101401 Alarm Horn & Flash |
| 3 | 101302 Shutdown relay |
| 4 | 1011100 Service switch |
| 5 | 101801 Spark detector SDD (Detection in daylight) * 101802 Spark detector SDN (Detection in dark) |
| 6 | * 101807 Junction box 101805 Junction box (ATEX) |
| 7 | 1019010 Extinguisher SA1 (< Ø500mm) 1019020 Extinguisher SA2 (> Ø500mm < Ø700mm) 1019030 Extinguisher SA3 (> Ø700mm <900mm) 1019040 Extinguisher SA4 (> Ø900mm) |
| 8 | 101301 Contact for 1" ball valve VK1-AA |
| 9 | * 102001 Flow Guard 1" 102003 Flow Guard 1½" 102004 Flow Guard 2" |
| 10 | 101201 Booster system 150L up to 3 nozzels. 101202 Booster system 300L up to 5 nozzels. 101203 Booster system 500L up to 7 nozzels. 101204 Booster system 1000L over to 7 nozzels. |
| 11 | 101602 Heatcable per meter. |
| 12 | 101700 Cable for detector - 5 wire w/shield. (100m roll) |
| 13 | 101702 Cable for Flow - pressure switch and solenoid valves. (50m roll) |
| 14 | 101704 Cable heater 3x1,5 Price per meter. (50m rool) |
| 15 | 101004 Bus Cabel. Price per meter. 1x2x0,34 w/shield. |
| | 5015100 How to connect spark detecting and extinguishing system UK |

* Most common product.



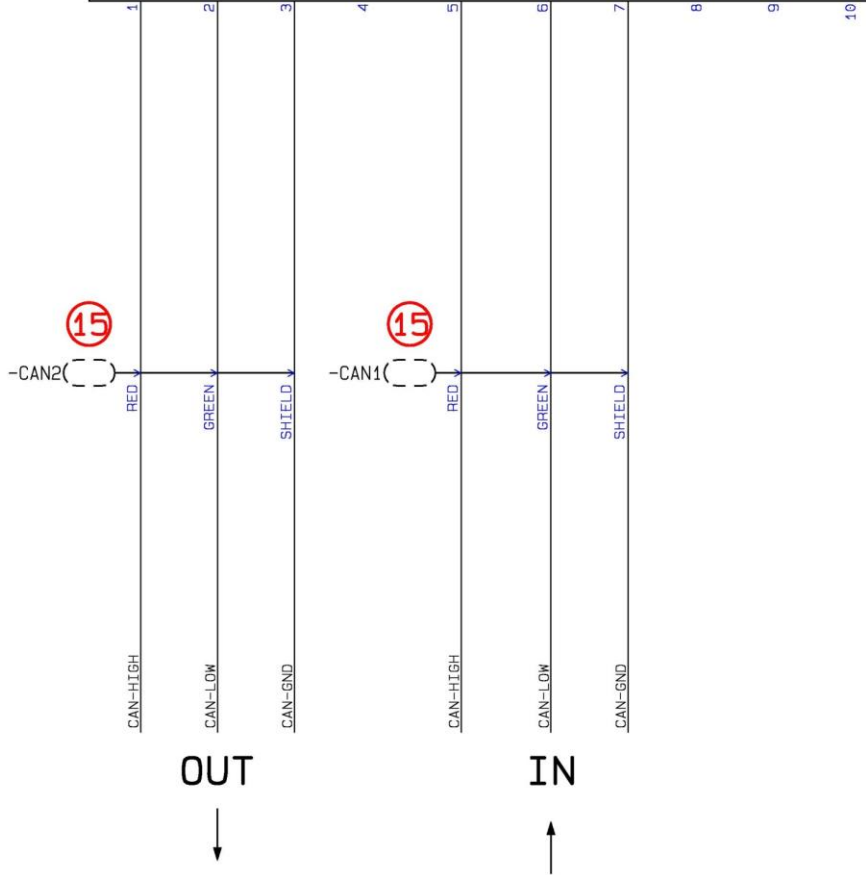
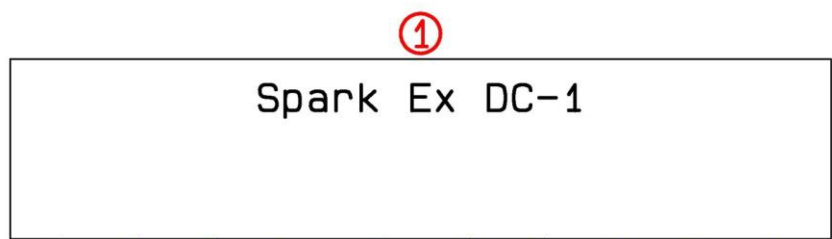
| | | | |
|--|-----------------------------------|-----------------------------|---------------------|
| Project title:How to connect spark detection and extinguishing system. | Project no.: 1 | Project rev.: | Page 4 |
| Customer: | DCC: | | Scale: |
| Page title: PART LIST | Drawing no.: 5015100 | Page rev.: | Previous page: 3 |
| Filename: SafeVent - Spark Ex - 1 zone system | Constructor (project/page) LH /LH | Last printed: | Next page: 5 |
| Page ref.: | Appr. (date/sign.) | Last correction: 12/22/2013 | Number of pages: 39 |



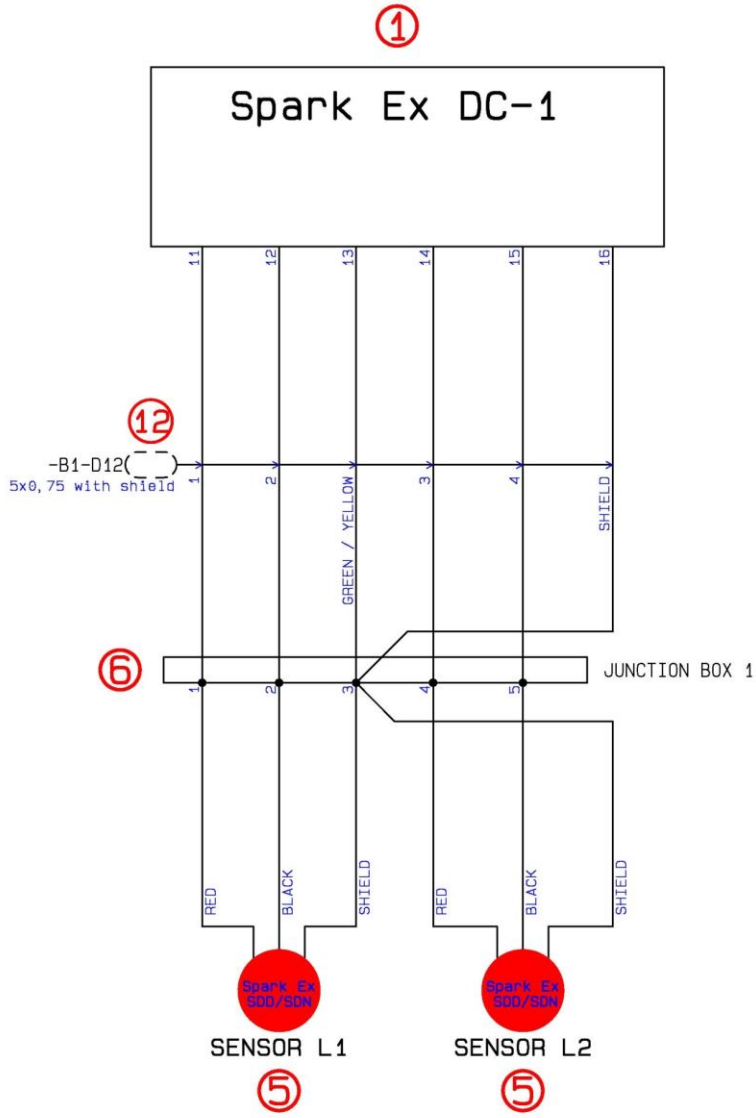
| | | | |
|--|--|-----------------------------------|----------------------------|
| Project title: How to connect spark detection and extinguishing system. | Project no.: 1 | Project rev.: | Page 5 |
| Customer: | DCC: | Scale: | |
| Page title: Cabel plan | Drawing no.: 5015100 | Page rev.: | Previous page: 4 |
| Filename: SafeVent - Spark Ex - 1 zone system | Constructor (project/page) LH /LH | Last printed: | Next page: 6 |
| Page ref.: | Appr. (date/sign.) | Last correction: 1/22/2014 | Number of pages: 39 |



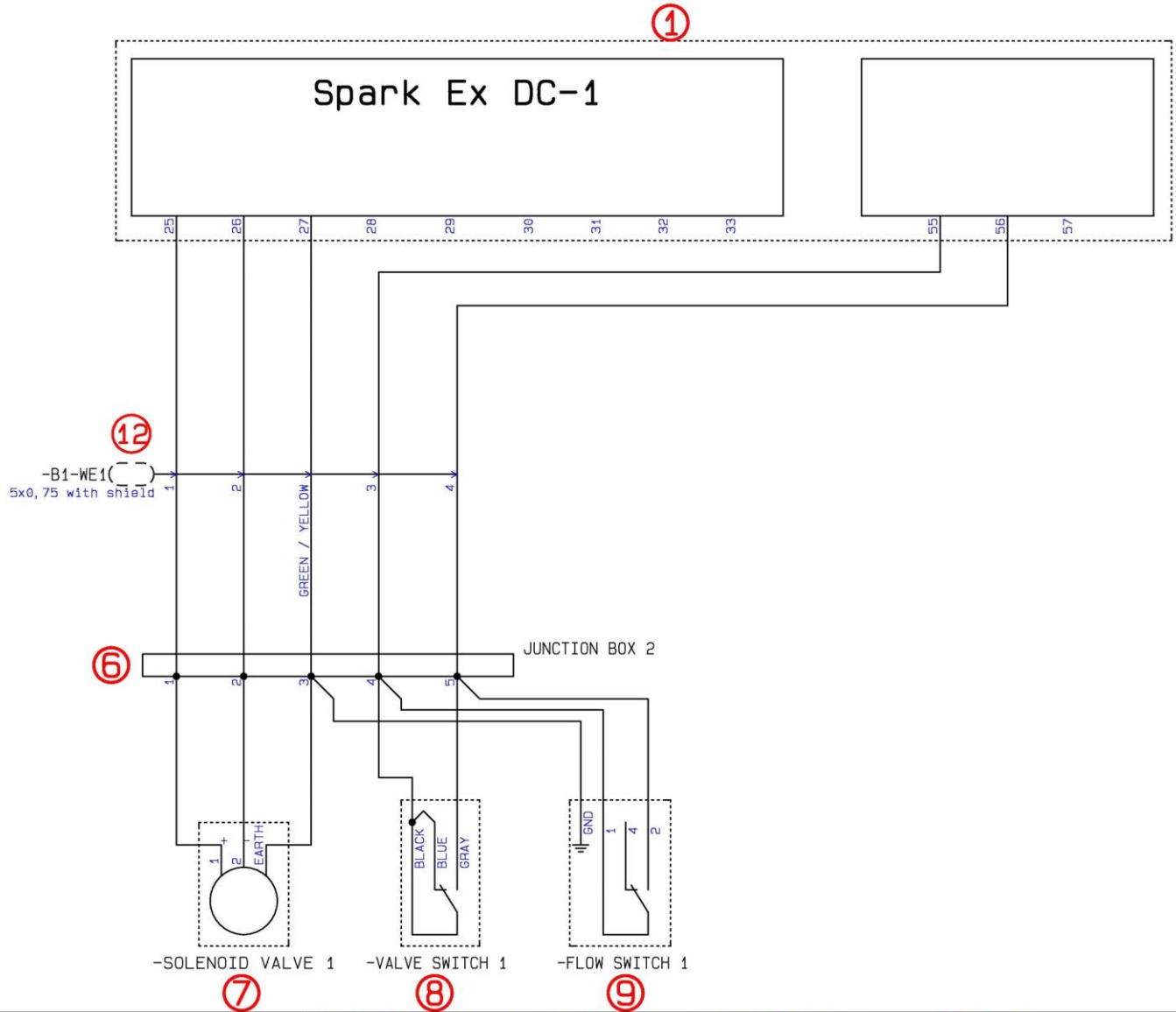
1 2 3 4 5 6 7 8



| | | | |
|--|--|------------------------------------|----------------------------|
| Project title: How to connect spark detection and extinguishing system. | Project no.: 1 | Project rev.: | Page 6 |
| Customer: | DCC: | | Scale: |
| Page title: CAN-BUS | Drawing no.: 5015100 | Page rev.: | Previous page: 5 |
| Filename: SafeVent - Spark Ex - 1 zone system | Constructor (project/page) LH /LH | Last printed: | Next page: 7 |
| Page ref.: | Appr. (date/sign.) | Last correction: 12/22/2013 | Number of pages: 39 |

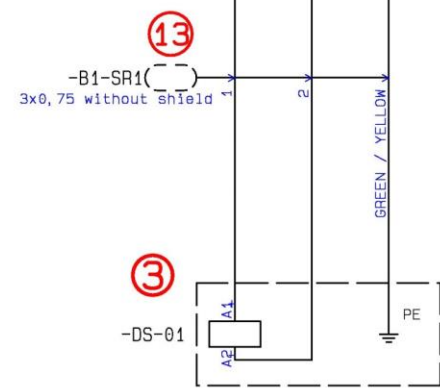
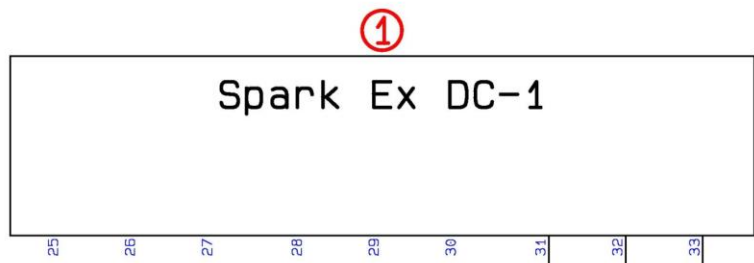


| | | | |
|--|---|------------------------------------|----------------------------|
| Project title: How to connect spark detection and extinguishing system. | Project no.: 1 | Project rev.: | Page 7 |
| Customer: | DCC: | | Scale: |
| Page title: Sensor SDN / SDD | Drawing no.: 5015100 | Page rev.: | Previous page: 6 |
| Filename: SafeVent - Spark Ex - 1 zone system | Constructor (project/page): LH /LH | Last printed: | Next page: 8 |
| Page ref.: | Appr. (date/sign.): | Last correction: 12/22/2013 | Number of pages: 39 |



| | | | |
|--|--|-----------------------------------|----------------------------|
| Project title: How to connect spark detection and extinguishing system. | Project no.: 1 | Project rev.: | Page 8 |
| Customer: | DCC: | Scale: | |
| Page title: Extinguisher 1 | Drawing no.: 5015100 | Page rev.: | Previous page: 7 |
| Filename: SafeVent - Spark Ex - 1 zone system | Constructor (project/page) LH /LH | Last printed: | Next page: 9 |
| Page ref.: | Appr. (date/sign.) | Last correction: 1/22/2014 | Number of pages: 39 |

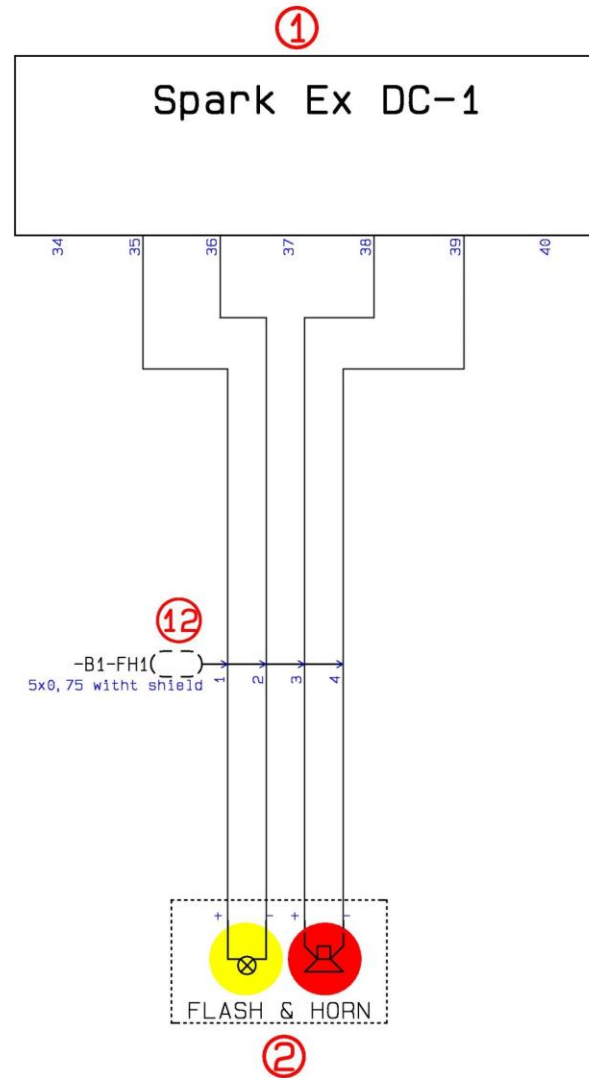




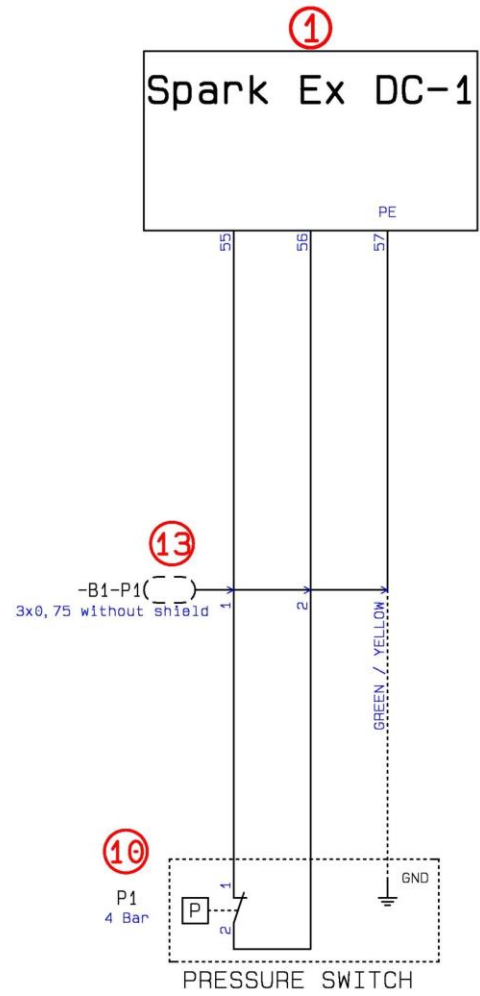
SHUTDOWN RELAY
THE RELAY WILL BE PULLED UNDER NORMAL PRODUCTION



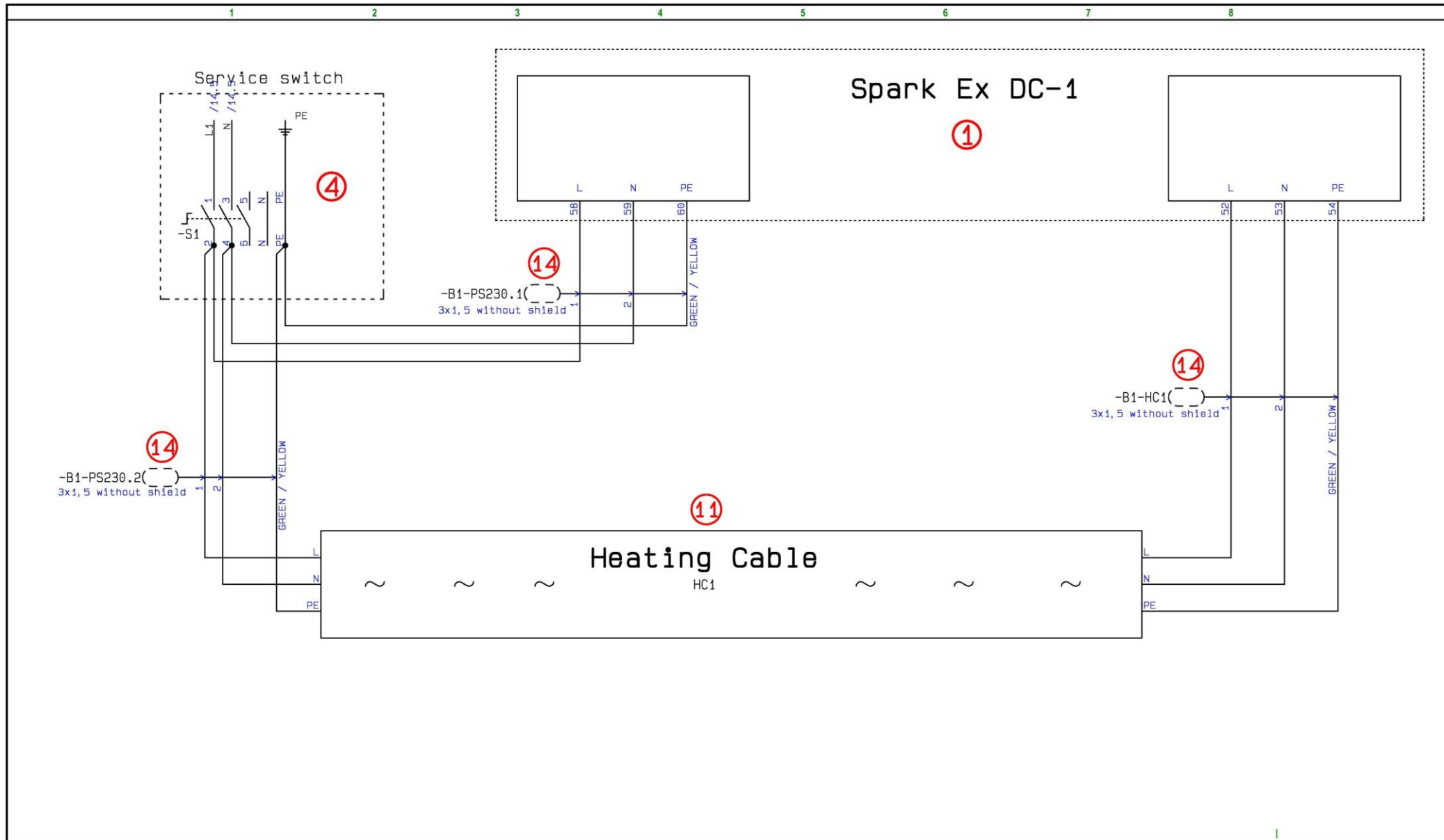
| | | | |
|--|--|------------------------------------|----------------------------|
| Project title: How to connect spark detection and extinguishing system. | Project no.: 1 | Project rev.: | Page 9 |
| Customer: | DCC: | | Scale: |
| Page title: Shutdown relay | Drawing no.: 5015100 | Page rev.: | Previous page: 8 |
| Filename: SafeVent - Spark Ex - 1 zone system | Constructor (project/page) LH /LH | Last printed: | Next page: 10 |
| Page ref.: | Appr. (date/sign.) | Last correction: 12/22/2013 | Number of pages: 39 |



| | | | |
|--|--|------------------------------------|----------------------------|
| Project title: How to connect spark detection and extinguishing system. | Project no.: 1 | Project rev.: | Page 10 |
| Customer: | DCC: | Scale: | |
| Page title: Flash & Horn | Drawing no.: 5015100 | Page rev.: | Previous page: 9 |
| Filename: SafeVent - Spark Ex - 1 zone system | Constructor (project/page) LH /LH | Last printed: | Next page: 11 |
| Page ref.: | Apr. (date/sign.) | Last correction: 12/22/2013 | Number of pages: 39 |



| | | | |
|--|--|------------------------------------|----------------------------|
| Project title: How to connect spark detection and extinguishing system. | Project no.: 1 | Project rev.: | Page 11 |
| Customer: | DCC: | | Scale: |
| Page title: Pressure switch | Drawing no.: 5015100 | Page rev.: | Previous page: 10 |
| Filename: SafeVent - Spark Ex - 1 zone system | Constructor (project/page) LH /LH | Last printed: | Next page: 12 |
| Page ref.: | Appr. (date/sign.) | Last correction: 12/22/2013 | Number of pages: 39 |



| | | | |
|--|---|------------------------------------|----------------------------|
| Project title: How to connect spark detection and extinguishing system. | Project no.: 1 | Project rev.: | Page 12 |
| Customer: | DCC: | | Scale: |
| Page title: Power supply & Heating Cable | Drawing no.: 5015100 | Page rev.: | Previous page: 11 |
| Filename: SafeVent - Spark Ex - 1 zone system | Constructor (project/page): LH /LH | Last printed: | Next page: 13 |
| Page ref.: | Appr. (date/sign.): | Last correction: 12/22/2013 | Number of pages: 39 |

Dip-settings

J18 JUMPER **OFF** -CAN-BUS TERM.

SW8 Dip 1 **OFF** -CAN-BUS VALUE 128
 Dip 2 **OFF** -CAN-BUS VALUE 64
 Dip 3 **OFF** -CAN-BUS VALUE 32
 Dip 4 **OFF** -CAN-BUS VALUE 16

SW7 Dip 1 **OFF** -CAN-BUS VALUE 8
 Dip 2 **OFF** -CAN-BUS VALUE 4
 Dip 3 **OFF** -CAN-BUS VALUE 2
 Dip 4 **OFF** -CAN-BUS VALUE 1

SW3 Dip 1 **ON** -Spark Ex Sensor L1 is connected
 Dip 2 **ON** -Spark Ex Sensor L2 is connected
 Dip 3 **OFF** -Spark Ex Sensor L3 is NOT connected
 Dip 4 **OFF** -Spark Ex Sensor L4 is NOT connected

SW4 Dip 1 **OFF** -SPARK DETECTOR 3 IS NOT A AFTER FAN DETECTOR
 Dip 2 **OFF** -SPARK DETECTOR 4 IS NOT A AFTER FAN DETECTOR
 Dip 3 **OFF** -No function
 Dip 4 **OFF** -No function

SW5 Dip 1 **ON** -OUTPUT 1 IS CONNECTED
 Dip 2 **OFF** -OUTPUT 2 IS NOT CONNECTED
 Dip 3 **ON** -OUTPUT 1 = SOLENOID VALVE
 Dip 4 **OFF** -OUTPUT 2 = SOLENOID VALVE

SW6 Dip 1 **ON** -WATER IS NOT ACTIVATED BY PRESSING ON THE TEST BUTTON
 Dip 2 **OFF** -No function
 Dip 3 **ON** -HEATCABLE IS CONNECTED (IF INSTALLED)
 Dip 4 **ON** -FLOW IS MEASURED WHEN THE SOLENOID VALVES ARE ACTIVATED

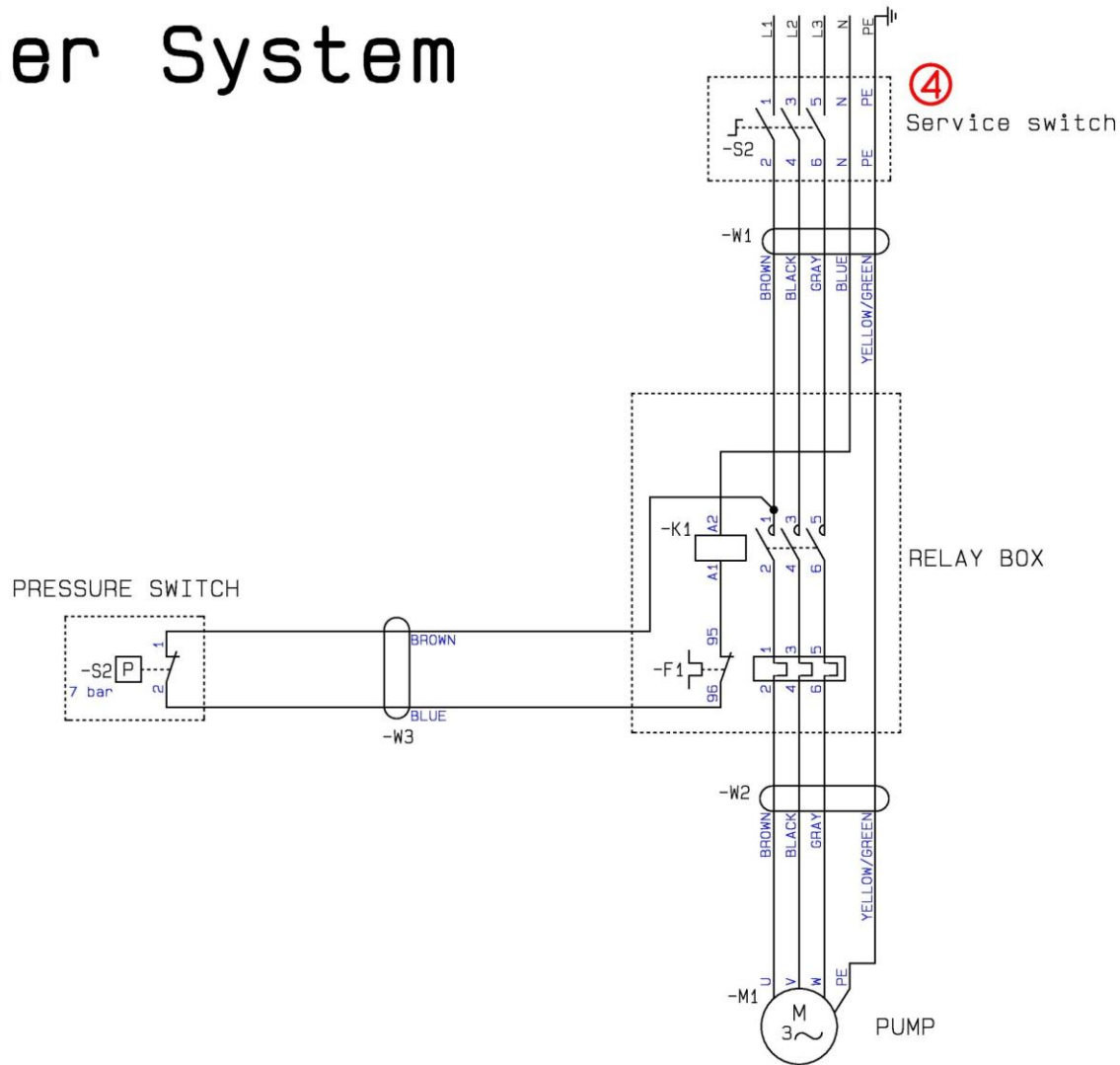
SW1 **3** -AFTER 20 SECONDS ALARM STAGE 2 WILL BE ACTIVATED (COSTUMER SPECIFIC DECISION, REF. TO INSTALLATION MANUAL)

SW2 **0** -NO DELAY OF EXTINGUISHING (IF WANTED REF. TO INSTALLATION MANUAL)



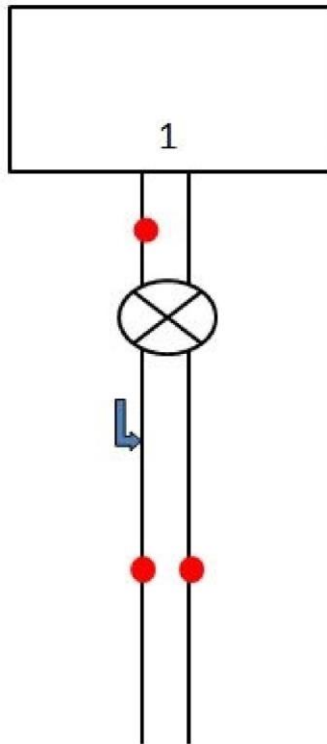
| | | | |
|--|-----------------------------------|----------------------------|---------------------|
| Project title:How to connect spark detection and extinguishing system. | Project no.: 1 | Project rev.: | Page 13 |
| Customer: | DCC: | Scale: | |
| Page title: Dip-settings | Drawing no.: 5015100 | Page rev.: | Previous page: 12 |
| Filename: SafeVent - Spark Ex - 1 zone system | Constructor (project/page) LH /LH | Last printed: | Next page: 14 |
| Page ref.: | Aprr. (date/sign.) | Last correction: 1/22/2014 | Number of pages: 39 |

Booster System



| | | | |
|--|---|-----------------------------------|----------------------------|
| Project title: How to connect spark detection and extinguishing system. | Project no.: 1 | Project rev.: | Page 14 |
| Customer: | DCC: | Scale: | |
| Page title: Booster system | Drawing no.: 5015100 | Page rev.: | Previous page: 13 |
| Filename: SafeVent - Spark Ex - 1 zone system | Constructor (project/page): LH /LH | Last printed: | Next page: 15 |
| Page ref.: | Appr. (date/sign.): | Last correction: 1/22/2014 | Number of pages: 39 |





How to connect

1 Zone system with after detektion



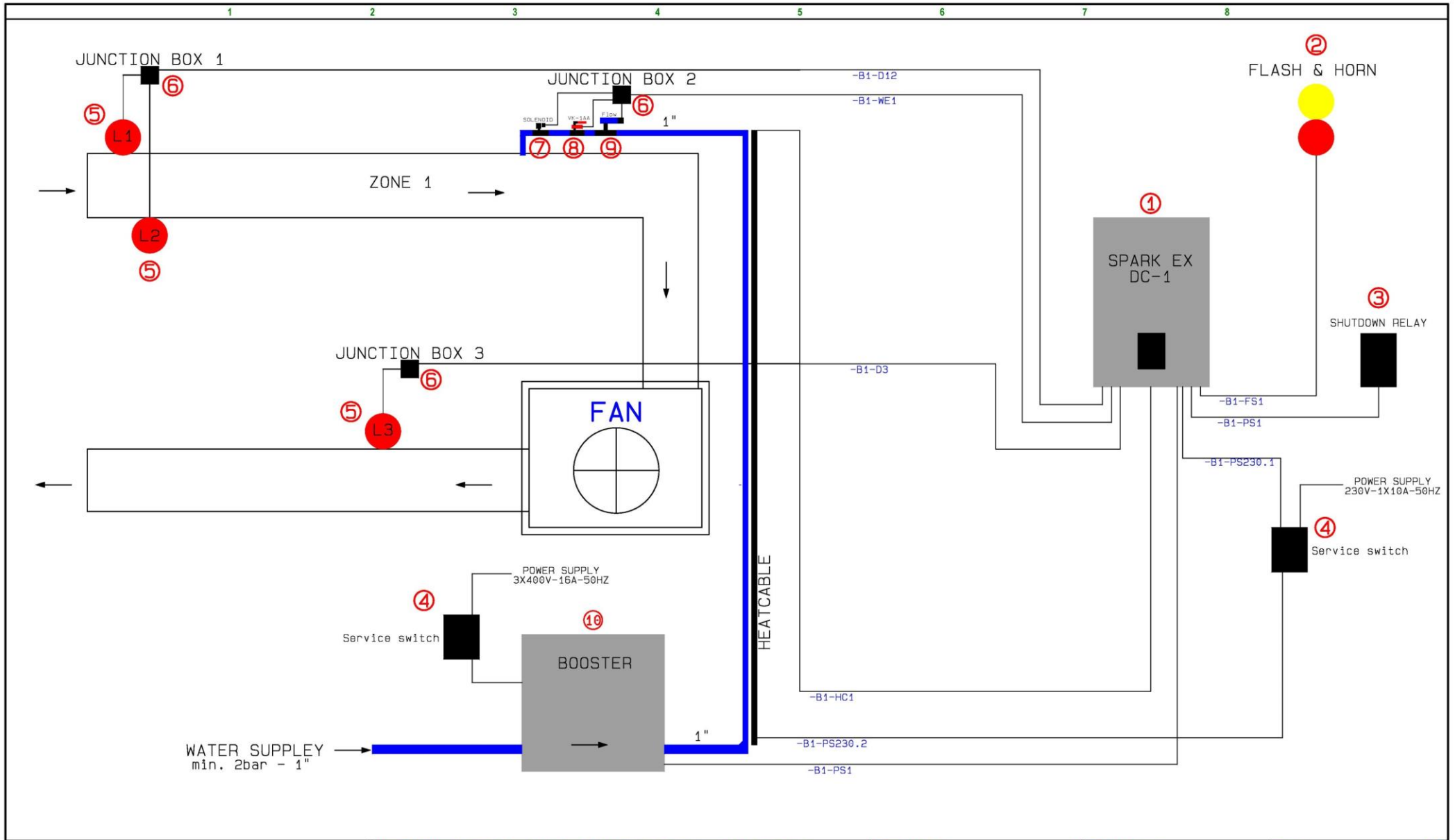
| | | | |
|---|-------------------------------|-----------------------------|---------------------|
| Project title: How to connect spark detection and extinguishing system. | Project no.: 1 | Project rev.: | Page 15 |
| Customer: | DCC: | | Scale: |
| Page title: Frontpage | Drawing no.: 5015100 | Page rev.: | Previous page: 14 |
| Filename: SafeVent - Spark Ex - 1 zone system with after detektion | Constructor (project/page) LH | Last printed: | Next page: 16 |
| Page ref.: | Appr. (date/sign.) | Last correction: 12/22/2013 | Number of pages: 39 |

| Item No. | Product Name |
|----------|---|
| 1 | * 101101 Sparkdetection central DC1 9000 101101-JP Sparkdetection central DC1 9000 JP (100V) |
| 2 | 101401 Alarm Horn & Flash |
| 3 | 101302 Shutdown relay |
| 4 | 1011100 Service switch |
| 5 | 101801 Spark detector SDD (Detection in daylight) * 101802 Spark detector SDN (Detection in dark) |
| 6 | * 101807 Junction box 101805 Junction box (ATEX) |
| 7 | 1019010 Extinguisher SA1 (< Ø500mm) 1019020 Extinguisher SA2 (> Ø500mm < Ø700mm) 1019030 Extinguisher SA3 (> Ø700mm <900mm) 1019040 Extinguisher SA4 (> Ø900mm) |
| 8 | 101301 Contact for 1" ball valve VK1-AA |
| 9 | * 102001 Flow Guard 1" 102003 Flow Guard 1½" 102004 Flow Guard 2" |
| 10 | 101201 Booster system 150L up to 3 nozzels. 101202 Booster system 300L up to 5 nozzels. 101203 Booster system 500L up to 7 nozzels. 101204 Booster system 1000L over to 7 nozzels. |
| 11 | 101602 Heatcable per meter. |
| 12 | 101700 Cable for detector - 5 wire w/shield. (100m roll) |
| 13 | 101702 Cable for Flow - pressure switch and solenoid valves. (50m roll) |
| 14 | 101704 Cable heater 3x1,5 Price per meter. (50m rool) |
| 15 | 101004 Bus Cabel. Price per meter. 1x2x0,34 w/shield. |
| | 5015100 How to connect spark detecting and extinguishing system UK |

* Most common product.



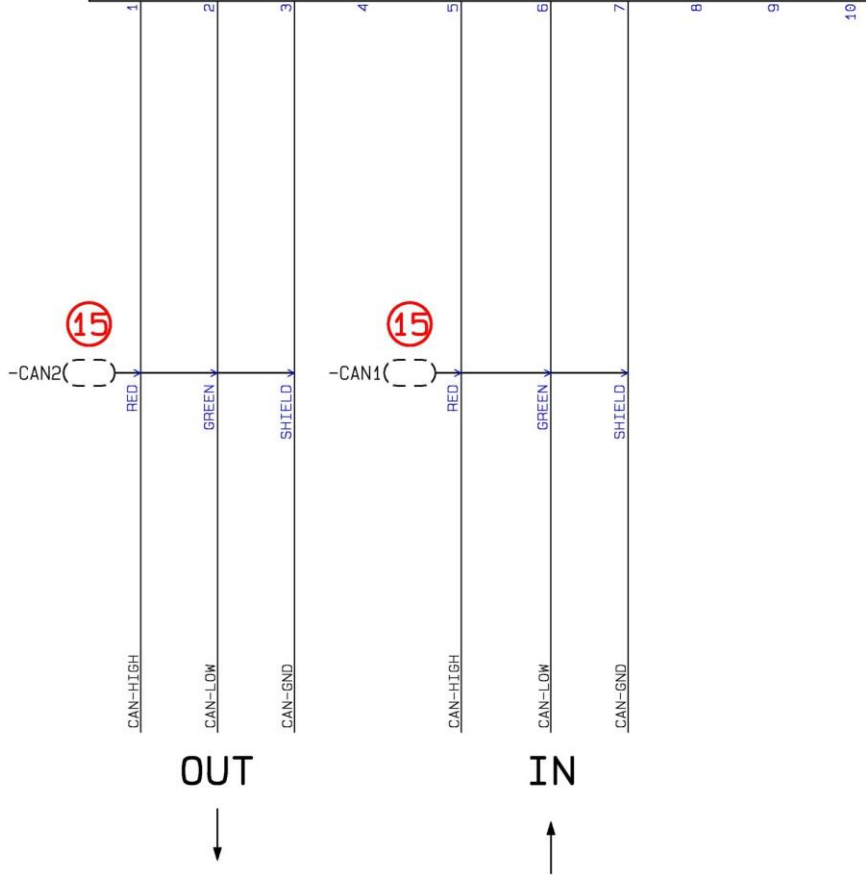
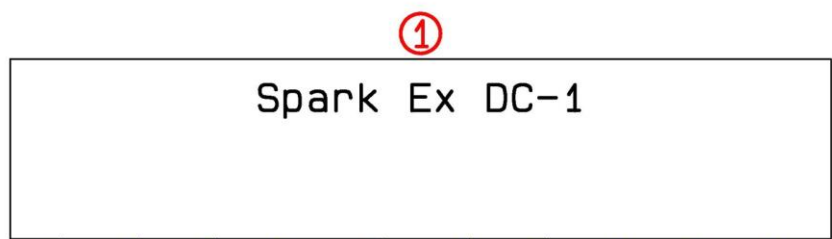
| | | | |
|--|-----------------------------------|-----------------------------|---------------------|
| Project title:How to connect spark detection and extinguishing system. | Project no.: 1 | Project rev.: | Page 16 |
| Customer: | DCC: | | Scale: |
| Page title: PART LIST | Drawing no.: 5015100 | Page rev.: | Previous page: 15 |
| Filename: SafeVent - Spark Ex - 1 zone system with after detektion | Constructor (project/page) LH /LH | Last printed: | Next page: 17 |
| Page ref.: | Appr. (date/sign.) | Last correction: 12/22/2013 | Number of pages: 39 |



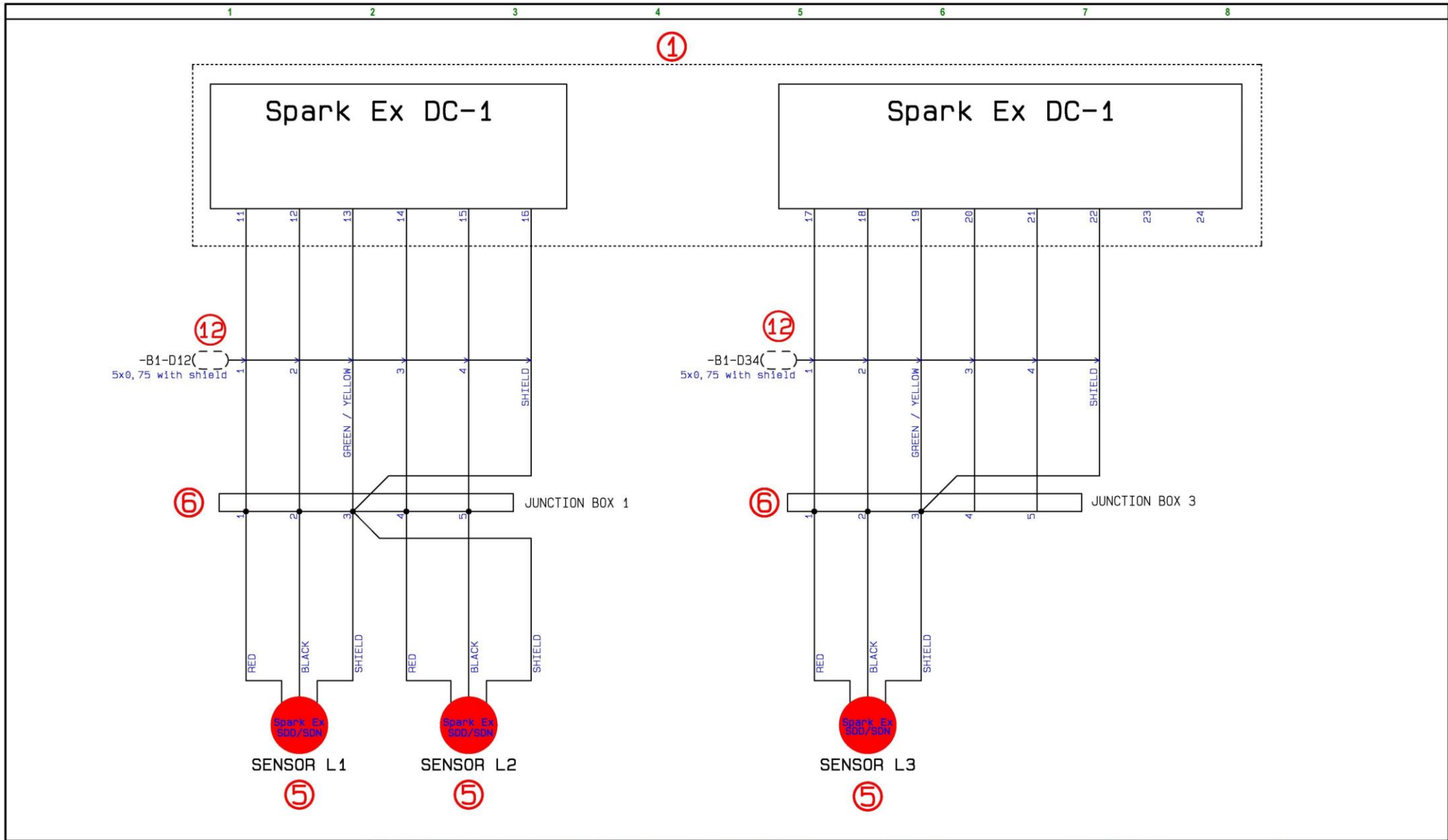
| | | | |
|--|--|-----------------------------------|----------------------------|
| Project title: How to connect spark detection and extinguishing system. | Project no.: 1 | Project rev.: | Page 17 |
| Customer: | DCC: | | Scale: |
| Page title: Cabel plan | Drawing no.: 5015100 | Page rev.: | Previous page: 16 |
| Filename: SafeVent - Spark Ex - 1 zone system with after detektion | Constructor (project/page) LH /LH | Last printed: | Next page: 18 |
| Page ref.: | Appr. (date/sign.) | Last correction: 1/22/2014 | Number of pages: 39 |



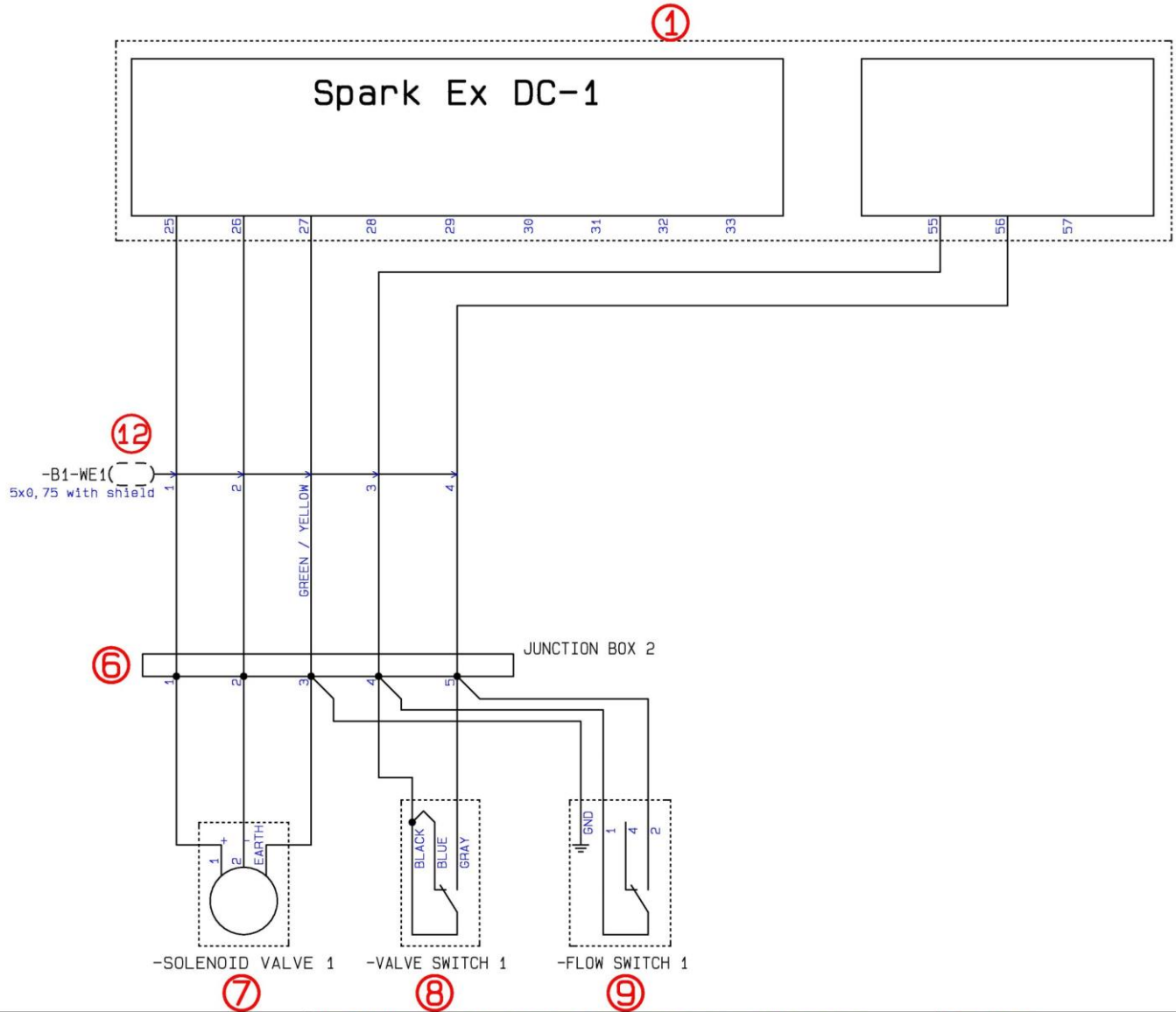
1 2 3 4 5 6 7 8



| | | | |
|---|-----------------------------------|----------------------------|---------------------|
| Project title: How to connect spark detection and extinguishing system. | Project no.: 1 | Project rev.: | Page 18 |
| Customer: | DCC: | Scale: | |
| Page title: CAN-BUS | Drawing no.: 5015100 | Page rev.: | Previous page: 17 |
| Filename: SafeVent - Spark Ex - 1 zone system with after detektion | Constructor (project/page) LH /LH | Last printed: | Next page: 19 |
| Page ref.: | Appr. (date/sign.) | Last correction: 1/22/2014 | Number of pages: 39 |

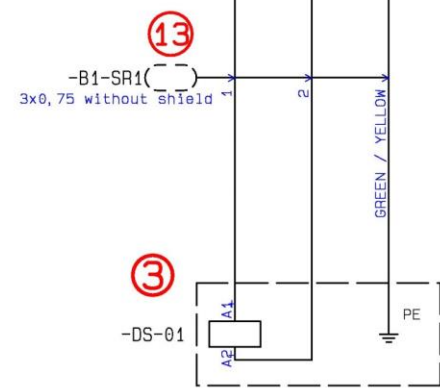
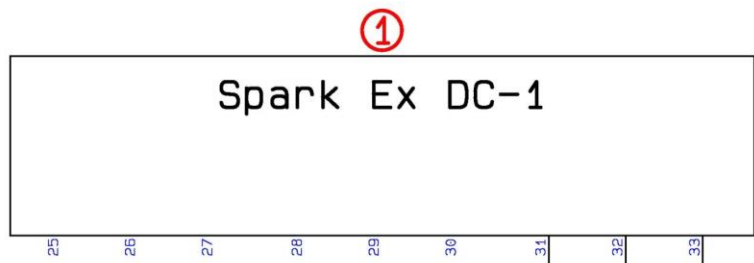


| | | | |
|--|--|-----------------------------------|----------------------------|
| Project title: How to connect spark detection and extinguishing system. | Project no.: 1 | Project rev.: | Page 19 |
| Customer: | DCC: | Scale: | |
| Page title: Sensor SDN / SDD | Drawing no.: 5015100 | Page rev.: | Previous page: 18 |
| Filename: SafeVent - Spark Ex - 1 zone system with after detektion | Constructor (project/page) LH /LH | Last printed: | Next page: 20 |
| Page ref.: | Appr. (date/sign.) | Last correction: 1/22/2014 | Number of pages: 39 |



| | | | |
|--|---|-----------------------------------|----------------------------|
| Project title: How to connect spark detection and extinguishing system. | Project no.: 1 | Project rev.: | Page 20 |
| Customer: | DCC: | | Scale: |
| Page title: Extinguisher 1 | Drawing no.: 5015100 | Page rev.: | Previous page: 19 |
| Filename: SafeVent - Spark Ex - 1 zone system with after detektion | Constructor (project/page): LH /LH | Last printed: | Next page: 21 |
| Page ref.: | Appr. (date/sign.): | Last correction: 1/22/2014 | Number of pages: 39 |

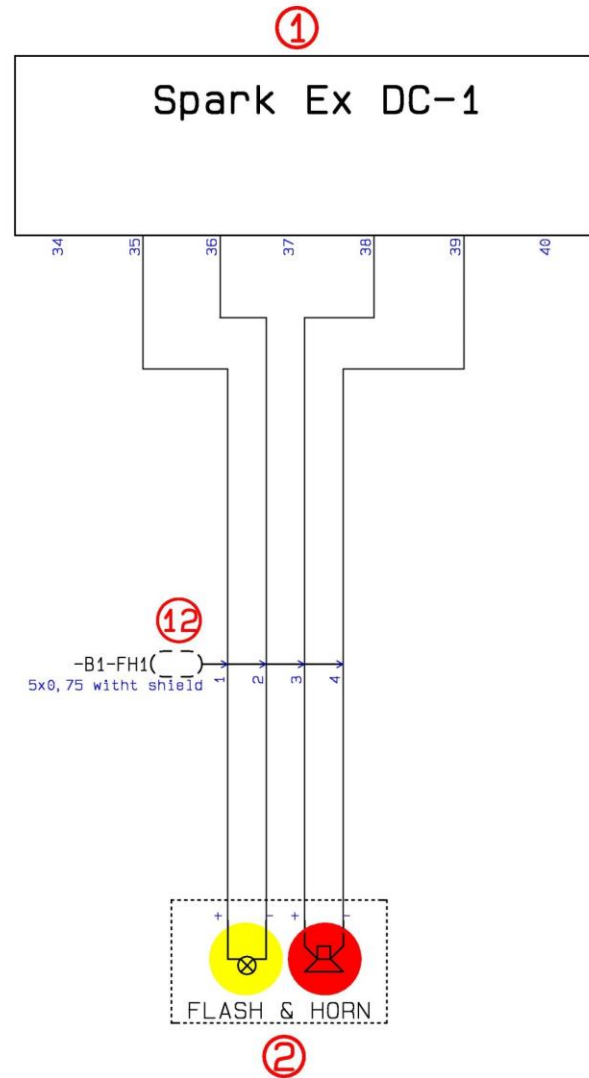




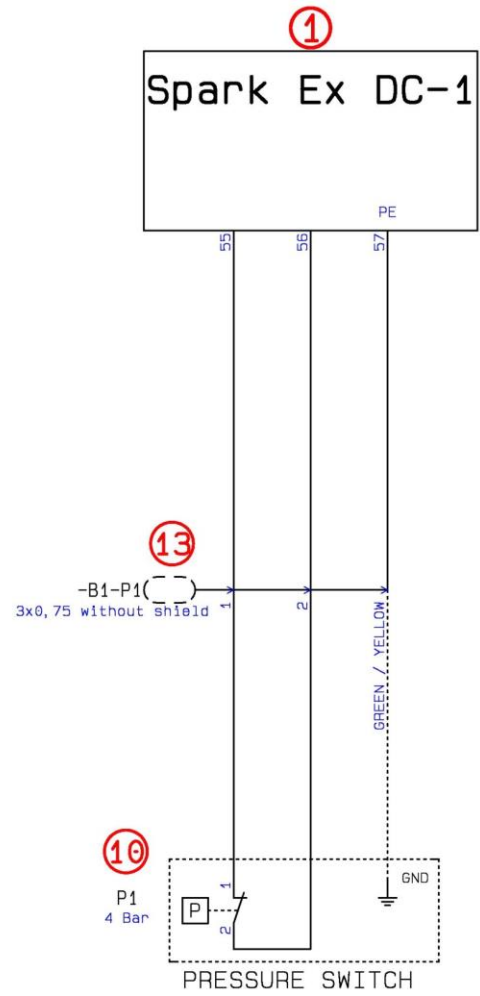
SHUTDOWN RELAY
THE RELAY WILL BE PULLED UNDER NORMAL PRODUCTION



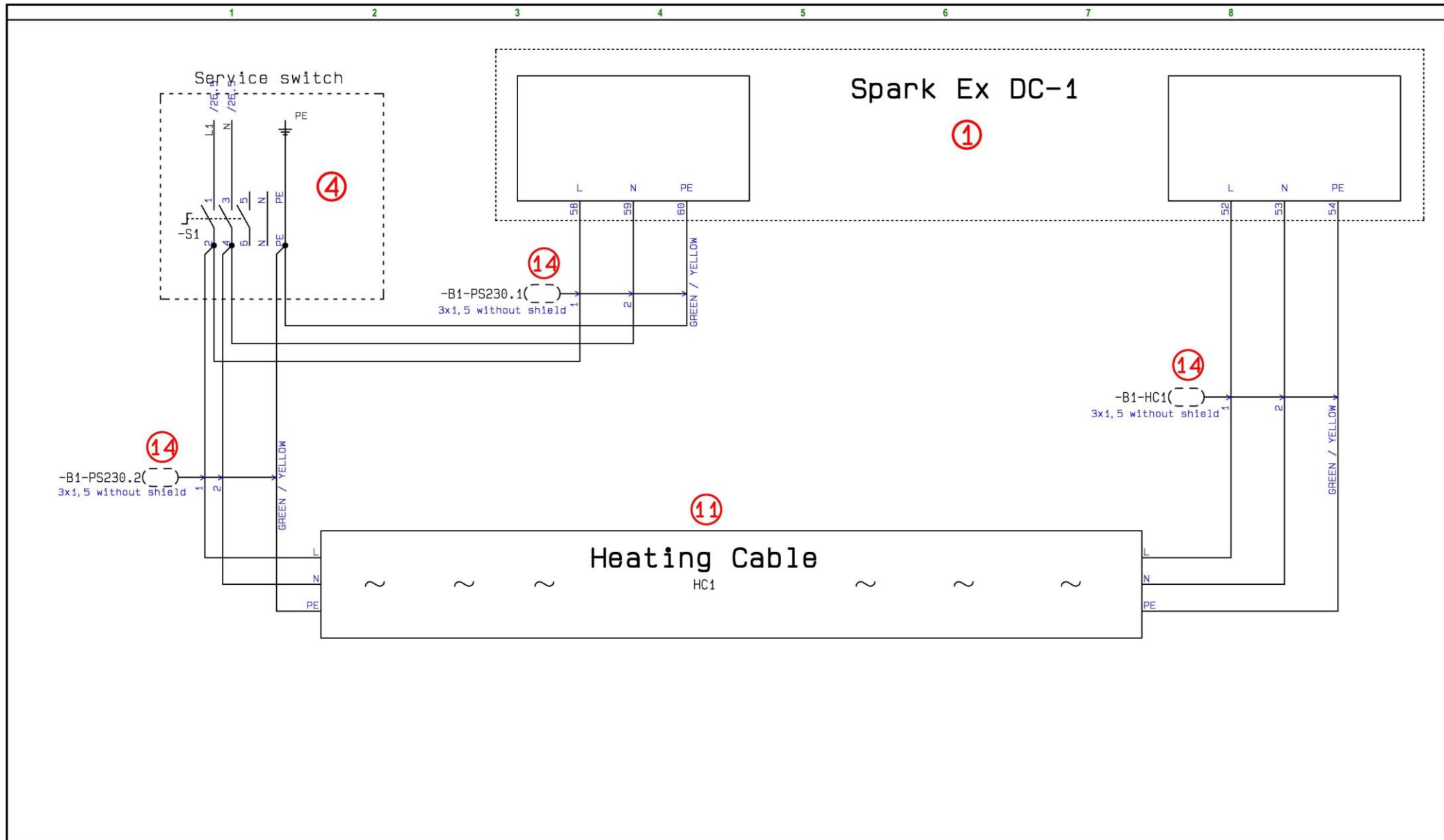
| | | | |
|--|--|------------------------------------|----------------------------|
| Project title: How to connect spark detection and extinguishing system. | Project no.: 1 | Project rev.: | Page 21 |
| Customer: | DCC: | | Scale: |
| Page title: Shutdown relay | Drawing no.: 5015100 | Page rev.: | Previous page: 20 |
| Filename: SafeVent - Spark Ex - 1 zone system with after detektion | Constructor (project/page) LH /LH | Last printed: | Next page: 22 |
| Page ref.: | Appr. (date/sign.) | Last correction: 12/22/2013 | Number of pages: 39 |



| | | | |
|--|--|------------------------------------|----------------------------|
| Project title: How to connect spark detection and extinguishing system. | Project no.: 1 | Project rev.: | Page 22 |
| Customer: | DCC: | | Scale: |
| Page title: Flash & Horn | Drawing no.: 5015100 | Page rev.: | Previous page: 21 |
| Filename: SafeVent - Spark Ex - 1 zone system with after detektion | Constructor (project/page) LH /LH | Last printed: | Next page: 23 |
| Page ref.: | Aprr. (date/sign.) | Last correction: 12/22/2013 | Number of pages: 39 |



| | | | |
|--|--|------------------------------------|----------------------------|
| Project title: How to connect spark detection and extinguishing system. | Project no.: 1 | Project rev.: | Page 23 |
| Customer: | DCC: | | Scale: |
| Page title: Pressure switch | Drawing no.: 5015100 | Page rev.: | Previous page: 22 |
| Filename: SafeVent - Spark Ex - 1 zone system with after detektion | Constructor (project/page) LH /LH | Last printed: | Next page: 24 |
| Page ref.: | Appr. (date/sign.) | Last correction: 12/22/2013 | Number of pages: 39 |



| | | | |
|--|---|------------------------------------|----------------------------|
| Project title: How to connect spark detection and extinguishing system. | Project no.: 1 | Project rev.: | Page 24 |
| Customer: | DCC: | | Scale: |
| Page title: Power supply & Heating Cable | Drawing no.: 5015100 | Page rev.: | Previous page: 23 |
| Filename: SafeVent - Spark Ex - 1 zone system with after detektion | Constructor (project/page): LH /LH | Last printed: | Next page: 25 |
| Page ref.: | Appr. (date/sign.): | Last correction: 12/22/2013 | Number of pages: 39 |

Dip-settings

J18 JUMPER **OFF** -CAN-BUS TERM.

SW8 Dip 1 **OFF** -CAN-BUS VALUE 128
 Dip 2 **OFF** -CAN-BUS VALUE 64
 Dip 3 **OFF** -CAN-BUS VALUE 32
 Dip 4 **OFF** -CAN-BUS VALUE 16

SW7 Dip 1 **OFF** -CAN-BUS VALUE 8
 Dip 2 **OFF** -CAN-BUS VALUE 4
 Dip 3 **OFF** -CAN-BUS VALUE 2
 Dip 4 **OFF** -CAN-BUS VALUE 1

SW3 Dip 1 **ON** -Spark Ex Sensor L1 is connected
 Dip 2 **ON** -Spark Ex Sensor L2 is connected
 Dip 3 **ON** -Spark Ex Sensor L3 is connected
 Dip 4 **OFF** -Spark Ex Sensor L4 is NOT connected

SW4 Dip 1 **ON** -SPARK DETECTOR 3 IS AFTER FAN DETECTOR
 Dip 2 **OFF** -SPARK DETECTOR 4 IS NOT A AFTER FAN DETECTOR
 Dip 3 **OFF** -No function
 Dip 4 **OFF** -No function

SW5 Dip 1 **ON** -OUTPUT 1 IS CONNECTED
 Dip 2 **OFF** -OUTPUT 2 IS NOT CONNECTED
 Dip 3 **ON** -OUTPUT 1 = SOLENOID VALVE
 Dip 4 **OFF** -OUTPUT 2 = SOLENOID VALVE

SW6 Dip 1 **ON** -WATER IS NOT ACTIVATED BY PRESSING ON THE TEST BUTTON
 Dip 2 **OFF** -No function
 Dip 3 **ON** -HEATCABLE IS CONNECTED (IF INSTALLED)
 Dip 4 **ON** -FLOW IS MEASURED WHEN THE SOLENOID VALVES ARE ACTIVATED

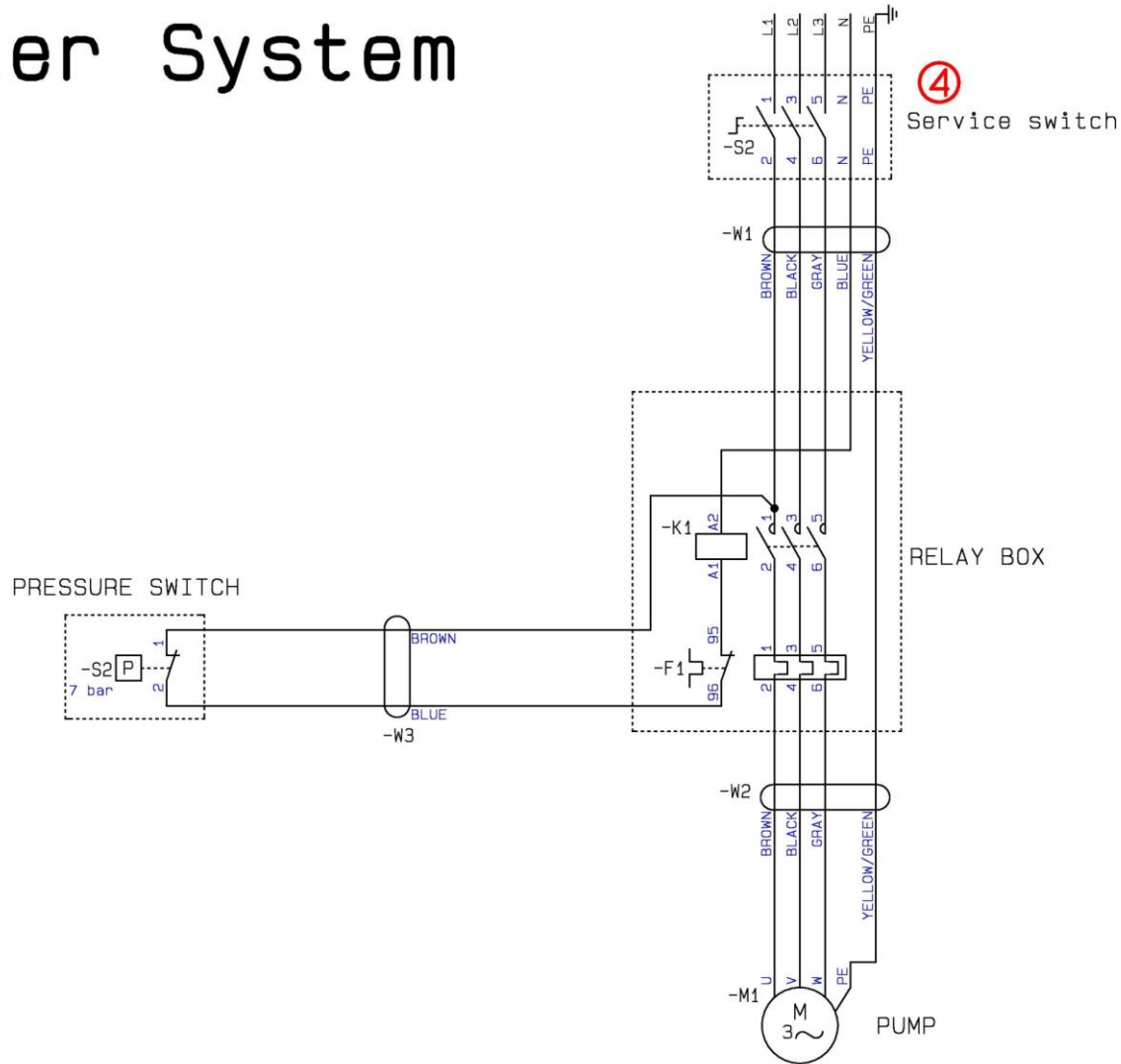
SW1 **3** -AFTER 20 SECONDS ALARM STAGE 2 WILL BE ACTIVATED (COSTUMER SPECIFIC DECISION, REF. TO INSTALLATION MANUAL)

SW2 **0** -NO DELAY OF EXTINGUISHING (IF WANTED REF. TO INSTALLATION MANUAL)



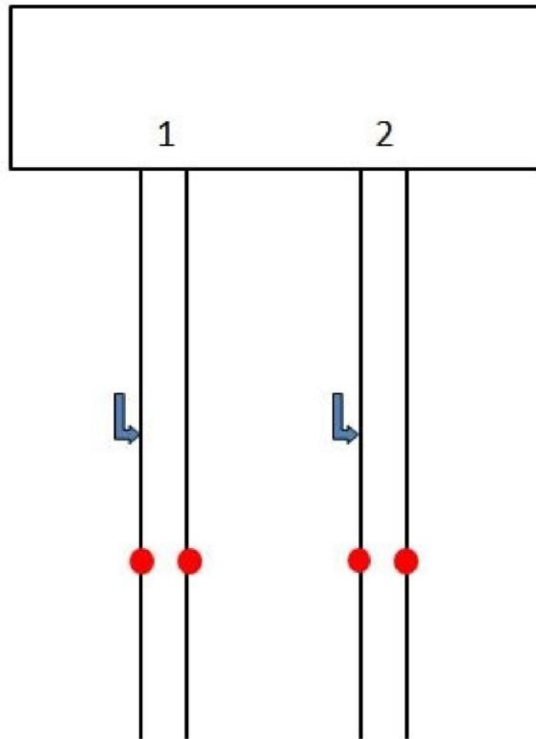
| | | | |
|--|-----------------------------------|----------------------------|---------------------|
| Project title:How to connect spark detection and extinguishing system. | Project no.: 1 | Project rev.: | Page 25 |
| Customer: | DCC: | Scale: | |
| Page title: Dip-settings | Drawing no.: 5015100 | Page rev.: | Previous page: 24 |
| Filename: SafeVent - Spark Ex - 1 zone system with after detektion | Constructor (project/page) LH /LH | Last printed: | Next page: 26 |
| Page ref.: | Appr. (date/sign.) | Last correction: 1/22/2014 | Number of pages: 39 |

Booster System



| | | | |
|--|--|-----------------------------------|----------------------------|
| Project title: How to connect spark detection and extinguishing system. | Project no.: 1 | Project rev.: | Page 26 |
| Customer: | DCC: | Scale: | |
| Page title: Booster system | Drawing no.: 5015100 | Page rev.: | Previous page: 25 |
| Filename: SafeVent - Spark Ex - 1 zone system with after detektion | Constructor (project/page) LH /LH | Last printed: | Next page: 27 |
| Page ref.: | Appr. (date/sign.) | Last correction: 1/22/2014 | Number of pages: 39 |





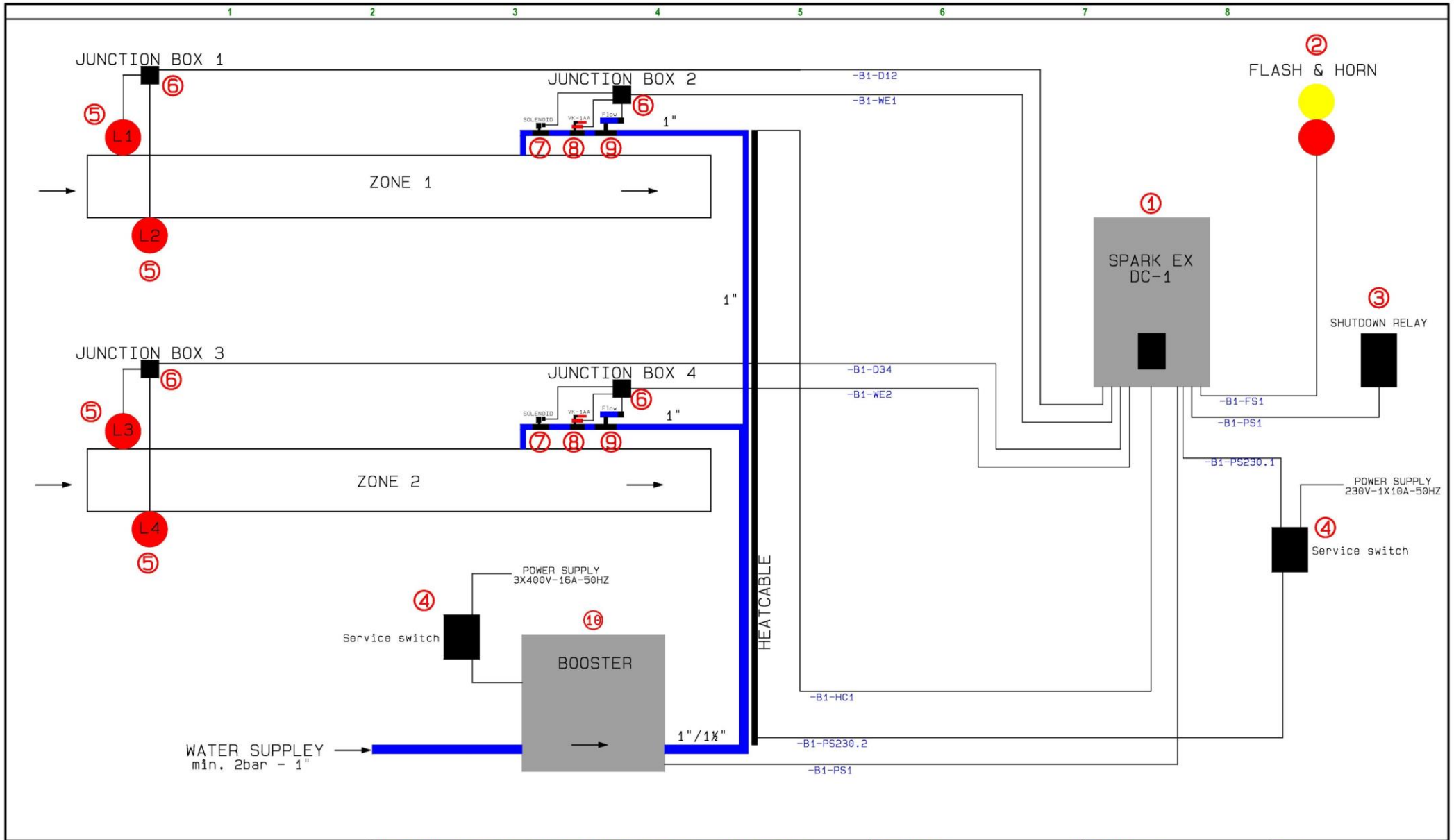
How to connect 2 Zone system

| Item No. | Product Name |
|----------|---|
| 1 | * 101101 Sparkdetection central DC1 9000 101101-JP Sparkdetection central DC1 9000 JP (100V) |
| 2 | 101401 Alarm Horn & Flash |
| 3 | 101302 Shutdown relay |
| 4 | 1011100 Service switch |
| 5 | 101801 Spark detector SDD (Detection in daylight) * 101802 Spark detector SDN (Detection in dark) |
| 6 | * 101807 Junction box 101805 Junction box (ATEX) |
| 7 | 1019010 Extinguisher SA1 (< Ø500mm) 1019020 Extinguisher SA2 (> Ø500mm < Ø700mm) 1019030 Extinguisher SA3 (> Ø700mm < 900mm) 1019040 Extinguisher SA4 (> Ø900mm) |
| 8 | 101301 Contact for 1" ball valve VK1-AA |
| 9 | * 102001 Flow Guard 1" 102003 Flow Guard 1½" 102004 Flow Guard 2" |
| 10 | 101201 Booster system 150L up to 3 nozzels. 101202 Booster system 300L up to 5 nozzels. 101203 Booster system 500L up to 7 nozzels. 101204 Booster system 1000L over to 7 nozzels. |
| 11 | 101602 Heatcable per meter. |
| 12 | 101700 Cable for detector - 5 wire w/shield. (100m roll) |
| 13 | 101702 Cable for Flow - pressure switch and solenoid valves. (50m roll) |
| 14 | 101704 Cable heater 3x1,5 Price per meter. (50m rool) |
| 15 | 101004 Bus Cabel. Price per meter. 1x2x0,34 w/shield. |
| | 5015100 How to connect spark detecting and extinguishing system UK |

* Most common product.



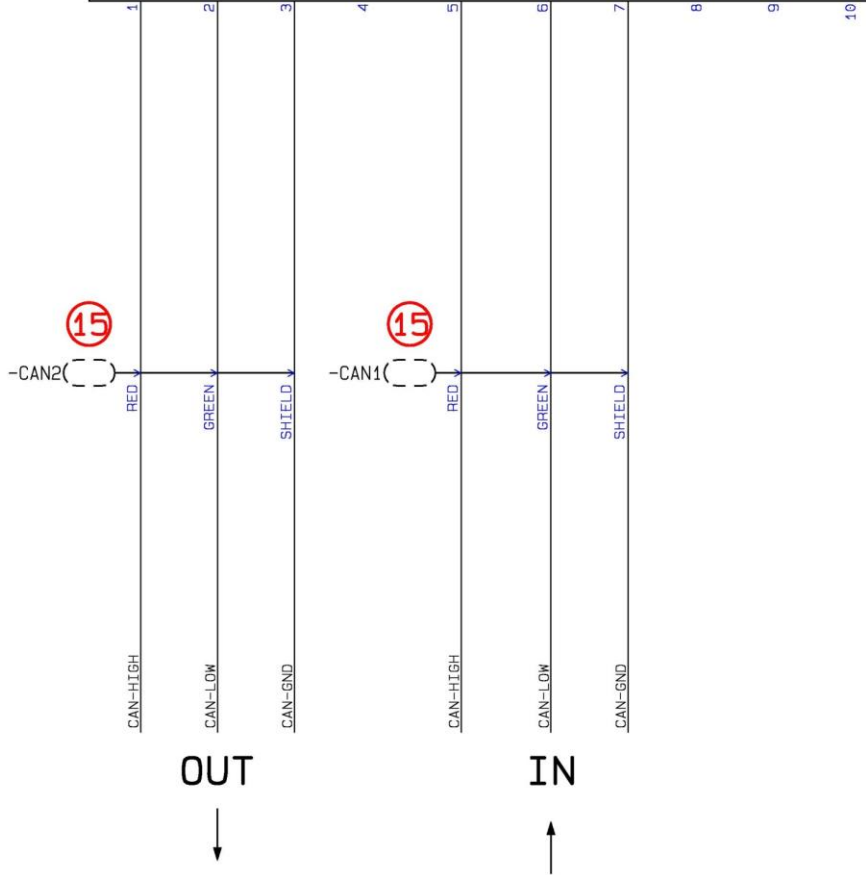
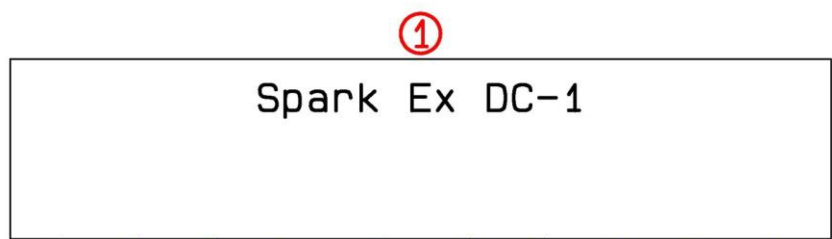
| | | | |
|---|-----------------------------------|-----------------------------|---------------------|
| Project title: How to connect spark detection and extinguishing system. | Project no.: 1 | Project rev.: | Page 28 |
| Customer: | DCC: | | Scale: |
| Page title: PART LIST | Drawing no.: 5015100 | Page rev.: | Previous page: 27 |
| Filename: SafeVent - Spark Ex - 2 zone system | Constructor (project/page) LH /LH | Last printed: | Next page: 29 |
| Page ref.: | Appr. (date/sign.): | Last correction: 12/22/2013 | Number of pages: 39 |



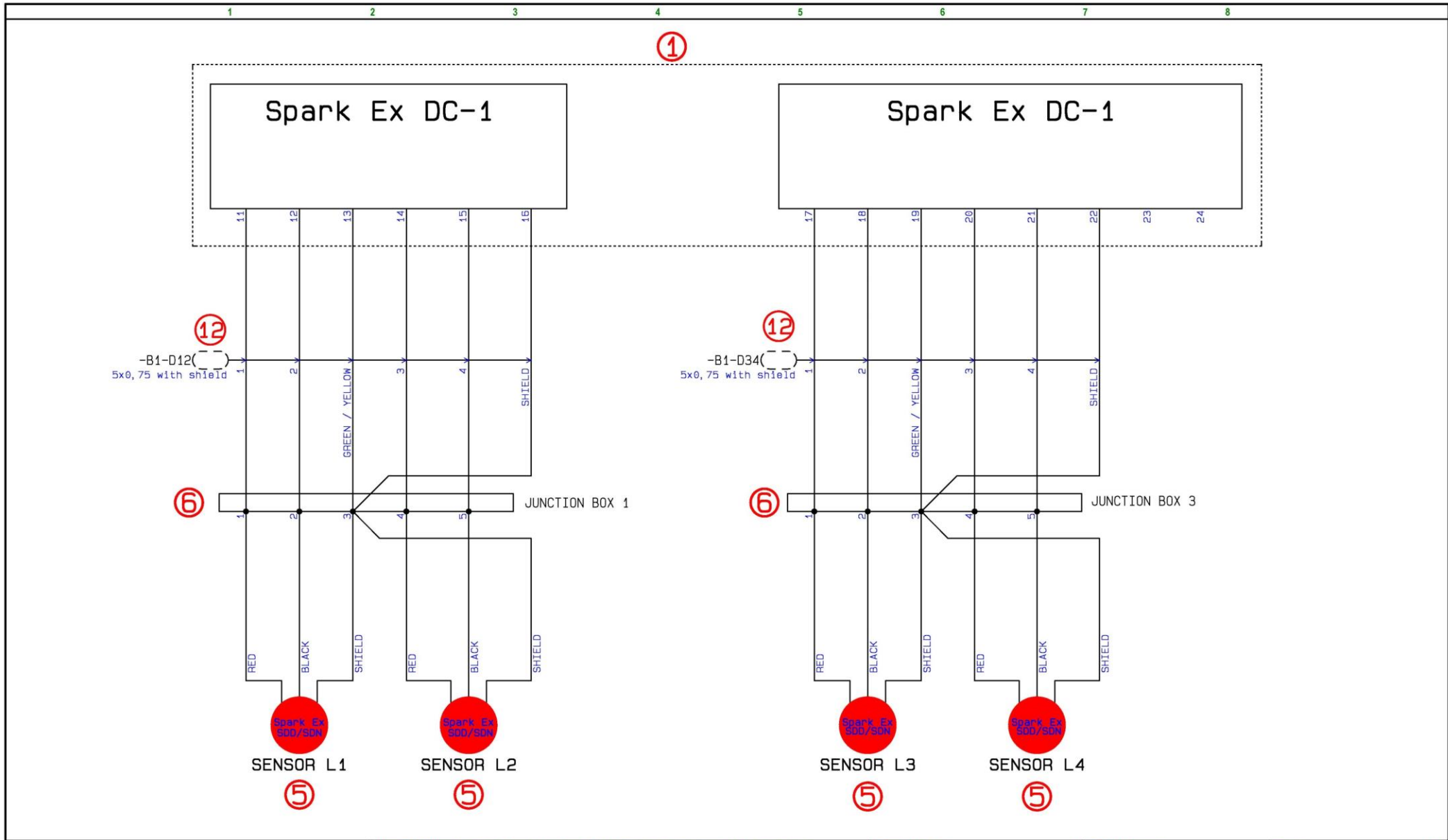
| | | | |
|--|---|-----------------------------------|----------------------------|
| Project title: How to connect spark detection and extinguishing system. | Project no.: 1 | Project rev.: | Page 29 |
| Customer: | DCC: | | Scale: |
| Page title: Cabel plan | Drawing no.: 5015100 | Page rev.: | Previous page: 28 |
| Filename: SafeVent - Spark Ex - 2 zone system | Constructor (project/page): LH /LH | Last printed: | Next page: 30 |
| Page ref.: | Appr. (date/sign.): | Last correction: 1/22/2014 | Number of pages: 39 |



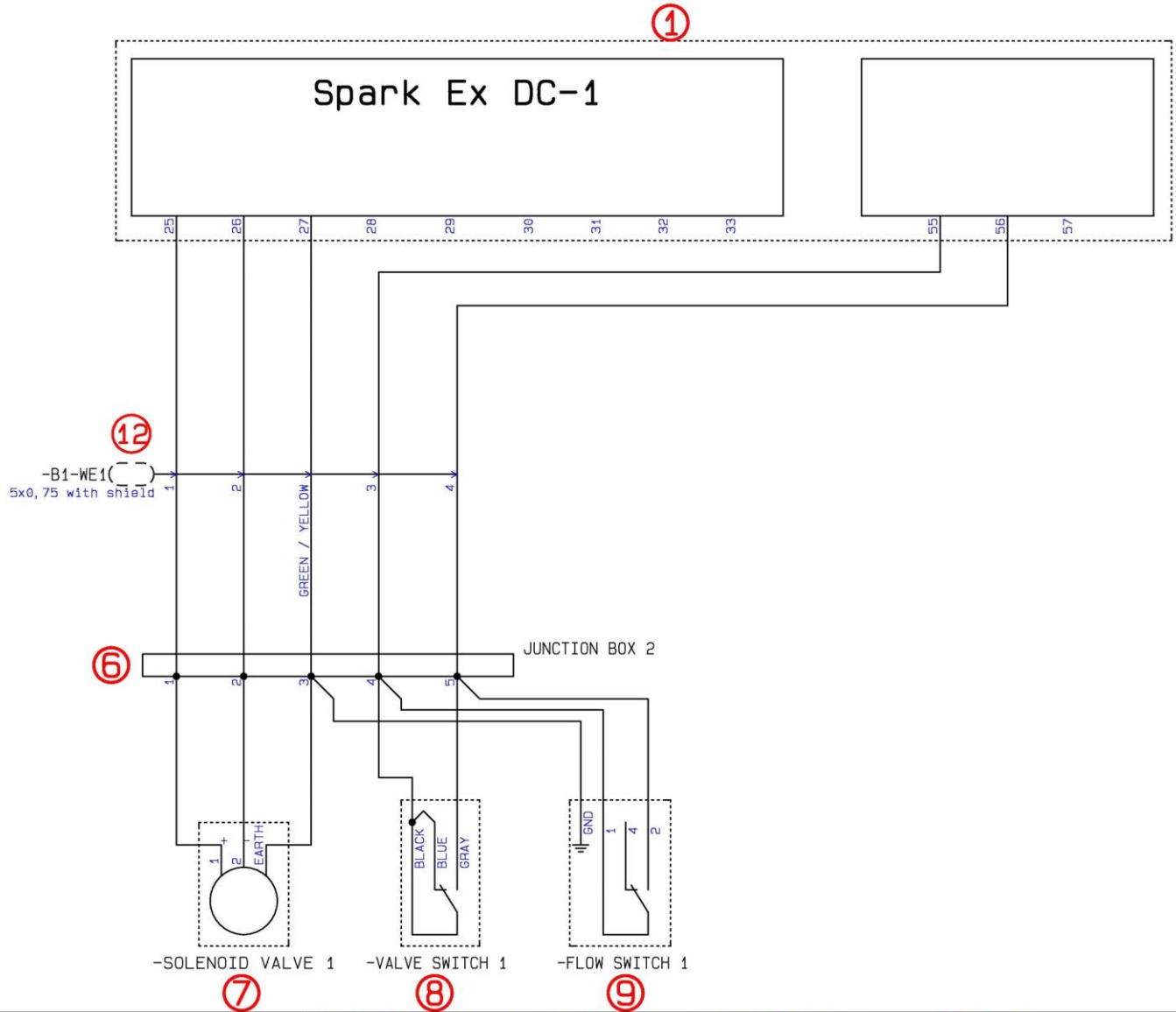
1 2 3 4 5 6 7 8



| | | | |
|---|-----------------------------------|-----------------------------|---------------------|
| Project title: How to connect spark detection and extinguishing system. | Project no.: 1 | Project rev.: | Page 30 |
| Customer: | DCC: | Scale: | |
| Page title: CAN-BUS | Drawing no.: 5015100 | Page rev.: | Previous page: 29 |
| Filename: SafeVent - Spark Ex - 2 zone system | Constructor (project/page) LH /LH | Last printed: | Next page: 31 |
| Page ref.: | Appr. (date/sign.) | Last correction: 12/22/2013 | Number of pages: 39 |

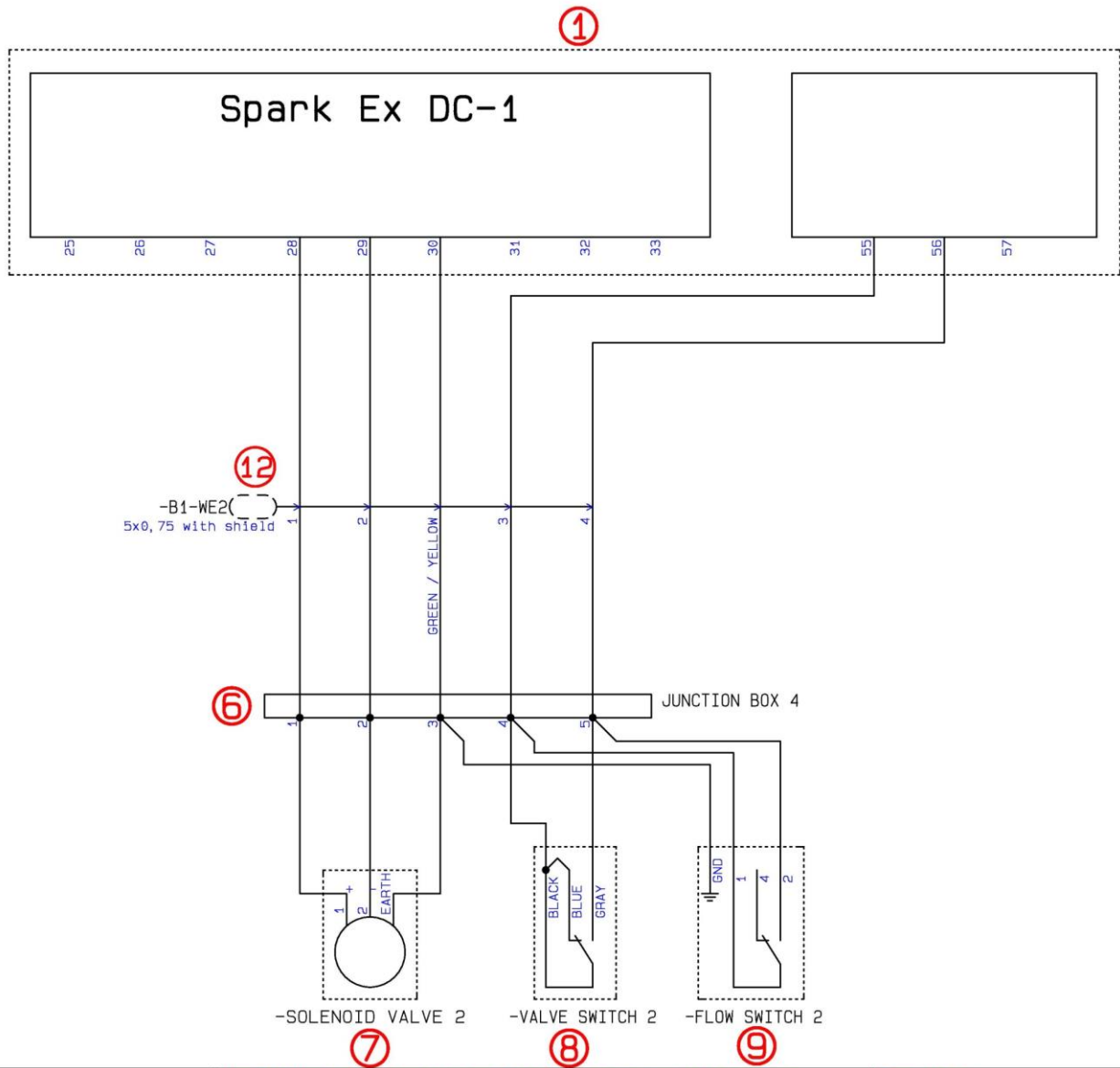


| | | | |
|--|--|-----------------------------------|----------------------------|
| Project title: How to connect spark detection and extinguishing system. | Project no.: 1 | Project rev.: | Page 31 |
| Customer: | DCC: | | Scale: |
| Page title: Sensor SDN / SDD | Drawing no.: 5015100 | Page rev.: | Previous page: 30 |
| Filename: SafeVent - Spark Ex - 2 zone system | Constructor (project/page) LH /LH | Last printed: | Next page: 32 |
| Page ref.: | Appr. (date/sign.) | Last correction: 1/22/2014 | Number of pages: 39 |

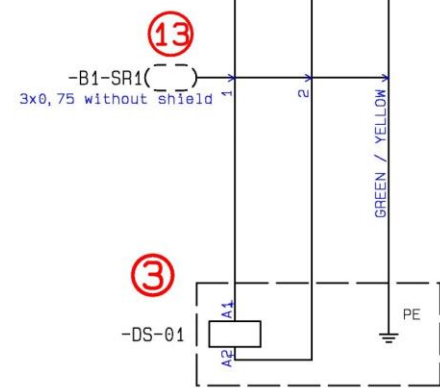
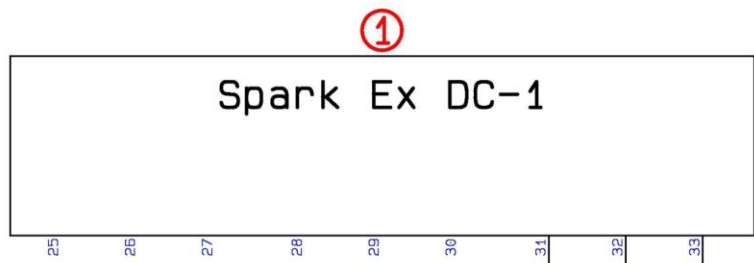


| | | | |
|--|--|-----------------------------------|----------------------------|
| Project title: How to connect spark detection and extinguishing system. | Project no.: 1 | Project rev.: | Page 32 |
| Customer: | DCC: | Scale: | |
| Page title: Extinguisher 1 | Drawing no.: 5015100 | Page rev.: | Previous page: 31 |
| Filename: SafeVent - Spark Ex - 2 zone system | Constructor (project/page) LH /LH | Last printed: | Next page: 33 |
| Page ref.: | Appr. (date/sign.) | Last correction: 1/22/2014 | Number of pages: 39 |





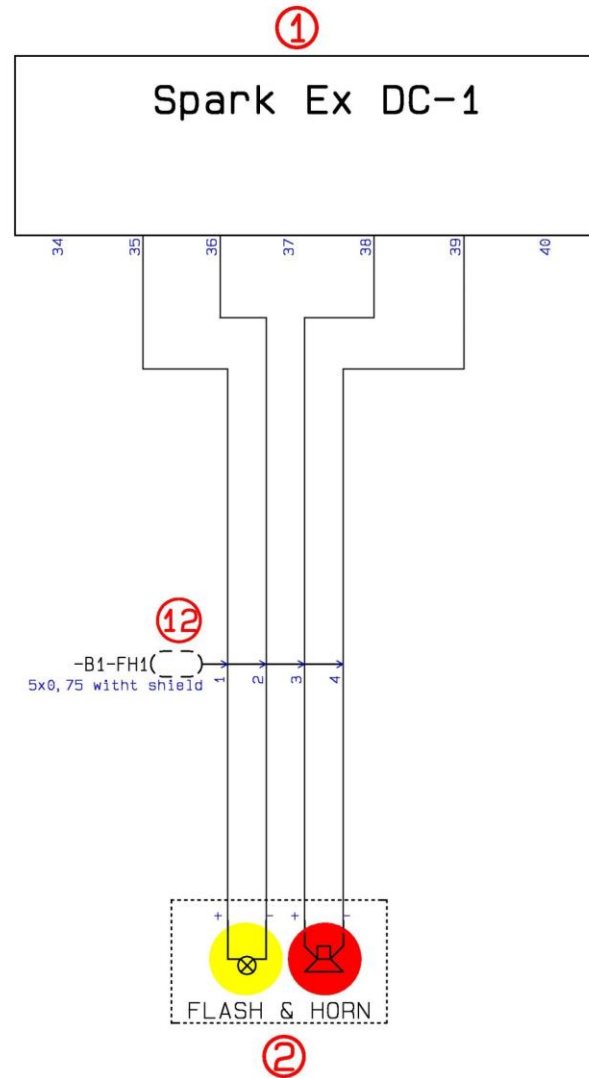
| | | | |
|--|---|------------------------------------|----------------------------|
| Project title: How to connect spark detection and extinguishing system. | Project no.: 1 | Project rev.: | Page 33 |
| Customer: | DCC: | Scale: | |
| Page title: Extinguisher 2 | Drawing no.: 5015100 | Page rev.: | Previous page: 32 |
| Filename: SafeVent - Spark Ex - 2 zone system | Constructor (project/page): LH /LH | Last printed: | Next page: 34 |
| Page ref.: | Appr. (date/sign.): | Last correction: 12/22/2013 | Number of pages: 39 |



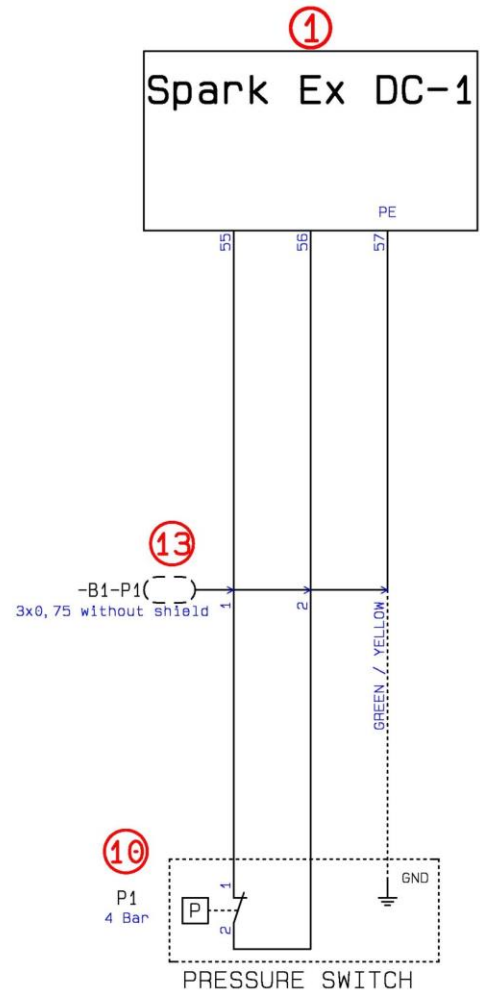
SHUTDOWN RELAY
THE RELAY WILL BE PULLED UNDER NORMAL PRODUCTION



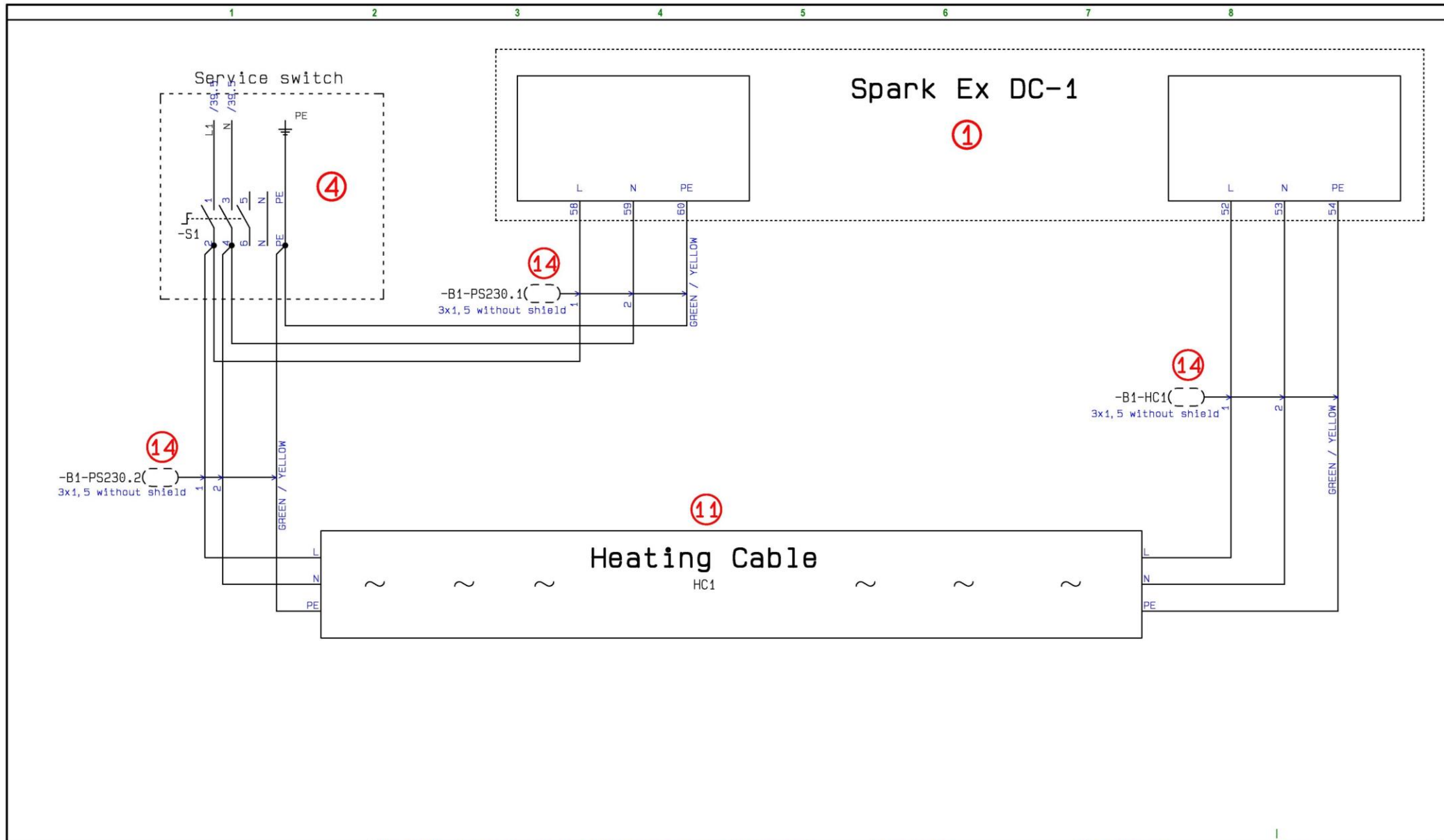
| | | | |
|--|--|------------------------------------|----------------------------|
| Project title: How to connect spark detection and extinguishing system. | Project no.: 1 | Project rev.: | Page 34 |
| Customer: | DCC: | | Scale: |
| Page title: Shutdown relay | Drawing no.: 5015100 | Page rev.: | Previous page: 33 |
| Filename: SafeVent - Spark Ex - 2 zone system | Constructor (project/page) LH /LH | Last printed: | Next page: 35 |
| Page ref.: | Appr. (date/sign.) | Last correction: 12/22/2013 | Number of pages: 39 |



| | | | |
|--|--|------------------------------------|----------------------------|
| Project title: How to connect spark detection and extinguishing system. | Project no.: 1 | Project rev.: | Page 35 |
| Customer: | DCC: | Scale: | |
| Page title: Flash & Horn | Drawing no.: 5015100 | Page rev.: | Previous page: 34 |
| Filename: SafeVent - Spark Ex - 2 zone system | Constructor (project/page) LH /LH | Last printed: | Next page: 36 |
| Page ref.: | Apr. (date/sign.) | Last correction: 12/22/2013 | Number of pages: 39 |



| | | | |
|--|--|------------------------------------|----------------------------|
| Project title: How to connect spark detection and extinguishing system. | Project no.: 1 | Project rev.: | Page 36 |
| Customer: | DCC: | | Scale: |
| Page title: Pressure switch | Drawing no.: 5015100 | Page rev.: | Previous page: 35 |
| Filename: SafeVent - Spark Ex - 2 zone system | Constructor (project/page) LH /LH | Last printed: | Next page: 37 |
| Page ref.: | Appr. (date/sign.) | Last correction: 12/22/2013 | Number of pages: 39 |



| | | | |
|--|---|------------------------------------|----------------------------|
| Project title: How to connect spark detection and extinguishing system. | Project no.: 1 | Project rev.: | Page 37 |
| Customer: | DCC: | | Scale: |
| Page title: Power supply & Heating Cable | Drawing no.: 5015100 | Page rev.: | Previous page: 36 |
| Filename: SafeVent - Spark Ex - 2 zone system | Constructor (project/page): LH /LH | Last printed: | Next page: 38 |
| Page ref.: | Appr. (date/sign.): | Last correction: 12/22/2013 | Number of pages: 39 |

Dip-settings

J18 JUMPER **OFF** -CAN-BUS TERM.

SW8 Dip 1 **OFF** -CAN-BUS VALUE 128
 Dip 2 **OFF** -CAN-BUS VALUE 64
 Dip 3 **OFF** -CAN-BUS VALUE 32
 Dip 4 **OFF** -CAN-BUS VALUE 16

SW7 Dip 1 **OFF** -CAN-BUS VALUE 8
 Dip 2 **OFF** -CAN-BUS VALUE 4
 Dip 3 **OFF** -CAN-BUS VALUE 2
 Dip 4 **OFF** -CAN-BUS VALUE 1

SW3 Dip 1 **ON** -Spark Ex Sensor L1 is connected
 Dip 2 **ON** -Spark Ex Sensor L2 is connected
 Dip 3 **ON** -Spark Ex Sensor L3 is connected
 Dip 4 **ON** -Spark Ex Sensor L4 is connected

SW4 Dip 1 **OFF** -SPARK DETECTOR 3 IS NOT A AFTER FAN DETECTOR
 Dip 2 **OFF** -SPARK DETECTOR 4 IS NOT A AFTER FAN DETECTOR
 Dip 3 **OFF** -No function
 Dip 4 **OFF** -No function

SW5 Dip 1 **ON** -OUTPUT 1 IS CONNECTED
 Dip 2 **ON** -OUTPUT 2 IS CONNECTED
 Dip 3 **ON** -OUTPUT 1 = SOLENOID VALVE
 Dip 4 **ON** -OUTPUT 2 = SOLENOID VALVE

SW6 Dip 1 **ON** -WATER IS NOT ACTIVATED BY PRESSING ON THE TEST BUTTON
 Dip 2 **OFF** -No function
 Dip 3 **ON** -HEATCABLE IS CONNECTED (IF INSTALLED)
 Dip 4 **ON** -FLOW IS MEASURED WHEN THE SOLENOID VALVES ARE ACTIVATED

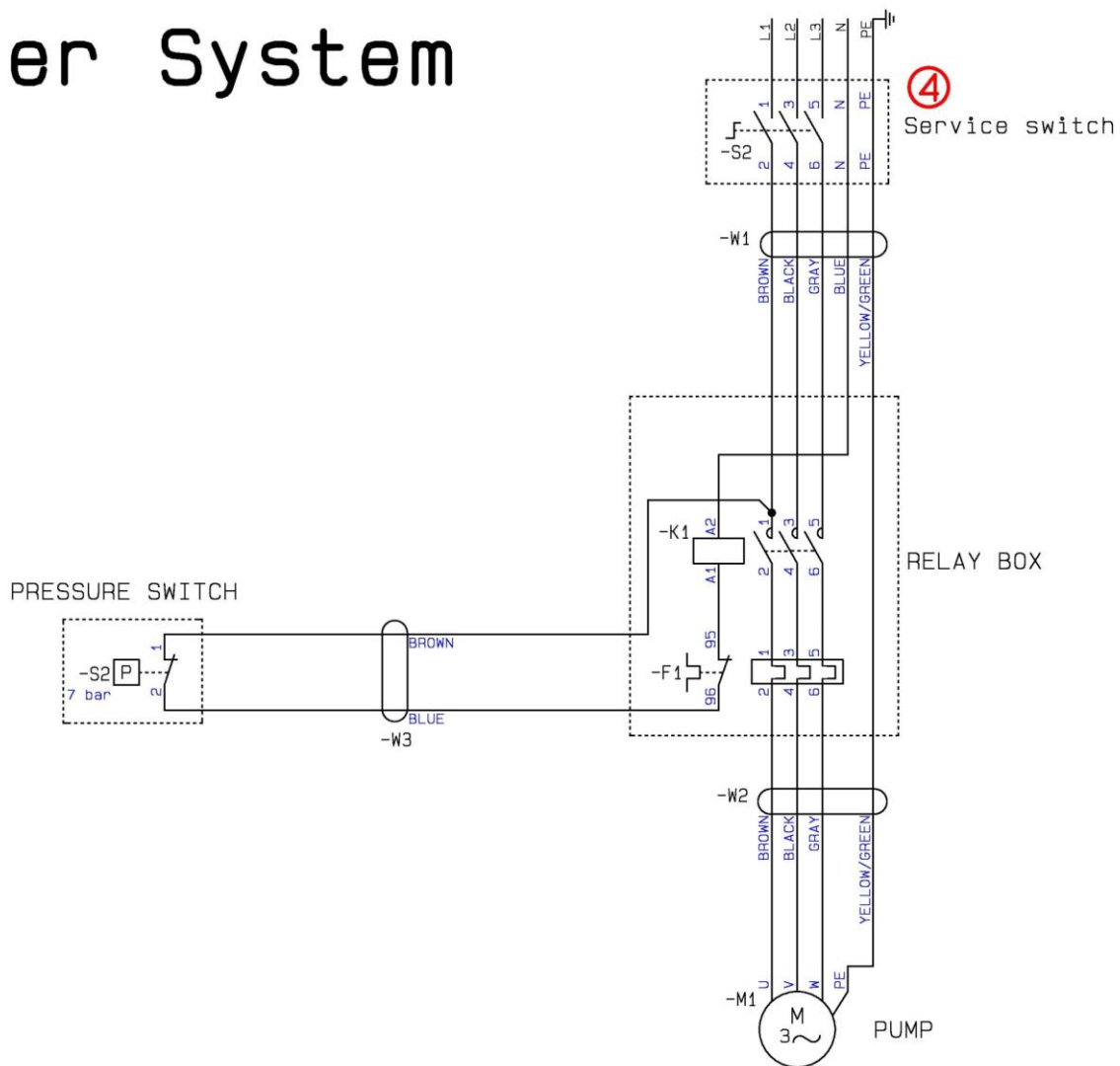
SW1 **3** -AFTER 20 SECONDS ALARM STAGE 2 WILL BE ACTIVATED (COSTUMER SPECIFIC DECISION, REF. TO INSTALLATION MANUAL)

SW2 **0** -NO DELAY OF EXTINGUISHING (IF WANTED REF. TO INSTALLATION MANUAL)



| | | | |
|--|-----------------------------------|----------------------------|---------------------|
| Project title:How to connect spark detection and extinguishing system. | Project no.: 1 | Project rev.: | Page 38 |
| Customer: | DCC: | Scale: | |
| Page title: Dip-settings | Drawing no.: 5015100 | Page rev.: | Previous page: 37 |
| Filename: SafeVent - Spark Ex - 2 zone system | Constructor (project/page) LH /LH | Last printed: | Next page: 39 |
| Page ref.: | Apr. (date/sign.) | Last correction: 1/22/2014 | Number of pages: 39 |

Booster System



| | | | |
|--|---|-----------------------------------|----------------------------|
| Project title: How to connect spark detection and extinguishing system. | Project no.: 1 | Project rev.: | Page 39 |
| Customer: | DCC: | Scale: | |
| Page title: Booster system | Drawing no.: 5015100 | Page rev.: | Previous page: 38 |
| Filename: SafeVent - Spark Ex - 2 zone system | Constructor (project/page): LH /LH | Last printed: | Next page: |
| Page ref.: | Appr. (date/sign.): | Last correction: 1/22/2014 | Number of pages: 39 |

